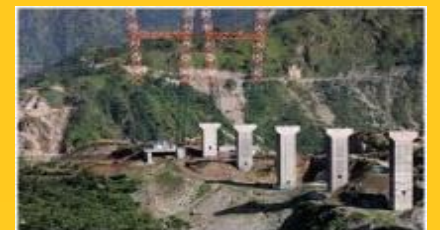




UNION TERRITORY OF JAMMU & KASHMIR

# SUSTAINABLE DEVELOPMENT GOALS PROGRESS REPORT 2020



PLANNING DEVELOPMENT AND MONITORING DEPARTMENT  
GOVERNMENT OF JAMMU & KASHMIR



# UNION TERRITORY OF JAMMU & KASHMIR

## SDG PROGRESS REPORT - 2020

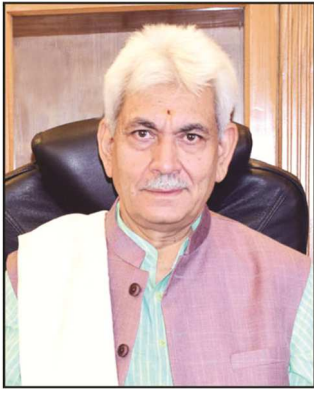


PLANNING DEVELOPMENT AND MONITORING DEPARTMENT,  
JAMMU & KASHMIR GOVERNMENT

# CONTENTS

## PROGRESS REPORT ON SUSTAINABLE DEVELOPMENT GOALS - 2020

S. No	SUSTAINABLE DEVELOPMENT GOALS (SDG)	NO OF TARGETS	NO OF INDICATORS	PAGE NO
1	2	3	4	5
	<b>Messages</b>			I-VI
	<b>Introduction</b>			a-e
1	<b>SDG GOAL - 1</b> END POVERTY IN ALL ITS FORMS EVERYWHERE	5	18	1-4
2	<b>SDG GOAL – 2</b> END HUNGER, ACHIEVE FOOD SECURITY AND IMPROVED NUTRITION AND PROMOTE SUSTAINABLE AGRICULTURE	6	18	5-8
3	<b>SDG GOAL – 3</b> ENSURE HEALTHY LIVES AND PROMOTE WELL BEING FOR ALL AT ALL AGES	11	35	9-13
4	<b>SDG GOAL - 4</b> ENSURE INCLUSIVE AND EQUITABLE QUALITY EDUCATION AND PROMOTE LIFELONG LEARNING OPPORTUNITIES FOR ALL	6	16	14-18
5	<b>SDG GOAL - 5</b> ACHIEVE GENDER EQUALITY AND EMPOWER ALL WOMEN AND GIRLS	6	22	19-22
6	<b>SDG GOAL - 6</b> ENSURE AVAILABILITY AND SUSTAINABLE MANAGEMENT OF WATER AND SANITATION FOR ALL	5	10	23-25
7	<b>SDG GOAL - 7</b> ENSURE ACCESS TO AFFORDABLE, RELIABLE, SUSTAINABLE AND MODERN ENERGY FOR ALL	2	3	26-28
8	<b>SDG GOAL - 8</b> PROMOTE SUSTAINED, INCLUSIVE AND SUSTAINABLE ECONOMIC GROWTH, FULL AND PRODUCTIVE EMPLOYMENT AND DECENT WORK FOR ALL	11	26	29-33
9	<b>SDG GOAL - 9</b> BUILD RESILIENT INFRASTRUCTURE, PROMOTE INCLUSIVE AND SUSTAINABLE INDUSTRIALISATION AND FOSTER INNOVATION	3	5	34-36
10	<b>SDG GOAL - 10</b> REDUCED INEQUALITIES WITHIN AND AMONG COUNTRIES	3	7	37-39
11	<b>SDG GOAL - 11</b> MAKE CITIES AND HUMAN SETTLEMENTS INCLUSIVE, SAFE, RESILIENT AND SUSTAINABLE	5	8	40-42
12	<b>SDG GOAL - 12</b> ENSURE SUSTAINABLE CONSUMPTION & PRODUCTION PATTERNS	3	9	43-45
13	<b>SDG GOAL - 13</b> TAKE URGENT ACTION TO COMBAT CLIMATE CHANGE AND ITS IMPACTS	1	2	46-48
14	<b>SDG GOAL - 14</b> CONSERVE & SUSTAINABLY USE THE OCEANS, SEA AND MARINE RESOURCES FOR SUSTAINABLE DEVELOPMENT	0	0	49-49
15	<b>SDG GOAL - 15</b> PROTECT, RESTORE AND PROMOTE SUSTAINABLE USE OF TERRESTRIAL ECOSYSTEMS, SUSTAINABLY MANAGE FORESTS, COMBAT DESERTIFICATION AND HALT AND REVERSE LAND DEGRADATION AND HALT BIODIVERSITY LOSSES	6	11	50-52
16	<b>SDG GOAL - 16</b> PROMOTE PEACEFUL AND INCLUSIVE SOCIETIES FOR SUSTAINABLE DEVELOPMENT, PROVIDE ACCESS TO JUSTICE FOR ALL AND BUILD EFFECTIVE, ACCOUNTABLE AND INCLUSIVE INSTITUTIONS AT ALL LEVELS	8	16	53-56
	<b>TOTAL TARGETS &amp; INDICATORS</b>	<b>81</b>	<b>206</b>	
17	<b>SDG FRAMEWORK ADOPTED BY J&amp;K – CONCLUDING REMARKS</b>			57-58



**Manoj Sinha**



**LIEUTENANT GOVERNOR,  
Jammu & Kashmir  
RAJBHAVAN  
JAMMU-180001**

## **MESSAGE**

The Sustainable Development Goals (SDG), articulated by the global community, reinforces and commits us to continue our efforts with a goal-oriented approach. Balanced, inclusive and sustainable development together with the socio-economic progress of all individuals is the endeavour of the Government of Jammu & Kashmir.

The spectrum of the 17 SDGs and 169 targets range from poverty eradication, human health and sanitation to urban settlements and to safeguarding the global ecosystems on which humanity depends for its survival. These Goals form a cohesive and integrated package of global aspirations, the world commits to achieve by 2030. The SDGs address the most pressing global challenges of current time, calling upon collaborative partnerships across and between countries to balance the three dimensions of sustainable development - economic growth, environmental sustainability and social inclusion.

Indian government is already taking significant strides towards the attainment of SDGs. India's 'National Development Agenda' outlines the measures, which the government is taking on issues like poverty, sustainable growth, health, nutrition, gender equality and quality education, among several others. The endeavour of the J&K government is to ensure that benefits of the development (programmes/ schemes) reach to the last mile, be it basic necessities of life (food, income security, health, nutrition, education, power, employment), infrastructure, safety & security, environment protection, etc. which is the ultimate aim of the SDGs.

It is a matter of great pride for Jammu & Kashmir to be amongst the foremost States/UTs in India to prepare a base line document titled **"SDG PROGRESS REPORT-2020"** of the UT, based on the National Indicator Framework (NIF) 2.1 on Sustainable Development Goals. The Government of Jammu & Kashmir is fully committed to this dynamic agenda till 2030 and all efforts shall be made to accomplish this.

"SDG PROGRESS REPORT-2020" prepared for monitoring the progress of SDGs in the UT provides the vision of each goal besides strategies to achieve them. The Baseline (2015-16) data on the SDG indicators has been canvassed and compared with 2018-19 data to show the incremental progress during the period along with comparison of All India figures. Greater synergies shall be required to achieve SDGs in the Union Territory from all the Administrative Departments and at Districts level as well.

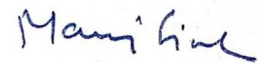
For next ten years, Union Territory of J&K is committed to the inclusive development and achievement of Sustainable Development Goals. Collective measures like, increase in investment, development of infrastructure, encouraging industrialization & private partnership, building social security & access to basic services, environment protection, improving safety & security, etc. are required to be taken that shall impact the larger benefits for future generations. All UT government

officials/stakeholders are encouraged to use this document as a reference document and accordingly implement schemes and programmes to ensure Goals under SDGs are achieved. I appeal each one in the UT to be part of this journey to a common destination – an inclusive & prosperous Jammu & Kashmir.

I congratulate Sh. B.V.R. Subrahmanyam, IAS, Chief Secretary, Government of Jammu & Kashmir (Chairperson, HLC on SDGs) and Sh. Simrandeep Singh, IAS, Secretary to Government, Planning Development & Monitoring Department, J&K, and his team who have worked hard to finalize this document.

I look forward to receive feedback and inputs from various stakeholders on this initiative.

November 26, 2020  
Jammu



**(Manoj Sinha)**



**BASEER AHMAD KHAN**



**Advisor to Hon'ble Lt. Governor  
Jammu & Kashmir, (UT)**

## **MESSAGE**

It is heartening to share that Jammu & Kashmir has come up with the **"SDG PROGRESS REPORT-2020"** which incorporates progress on UT Indicator Framework on Sustainable Development Goals (SDGs) based on the National Indicator Framework (NIF) version 2.1 finalized by Ministry of Statistics & Programme Implementation (MoSPI), GoI.

In September 2015, the UN General Assembly adopted 17 goals and 169 targets for sustainable development. These SDGs, also known as the Global Goals, are a universal call to action to end poverty, protect the planet and ensure that all people enjoy peace and prosperity. These goals are interconnected, with numerous synergies and overlaps between the goals and targets.


The Government of India is strongly committed to Agenda 2030, including the Sustainable Development Goals. The Prime Minister of India in his statement at the Sustainable Development Summit in New York on 25th September 2015 strongly affirmed India's commitment to Agenda 2030 and the SDGs. The Parliament of India has taken initiatives to propel the SDG agenda forward. India has provided strong endorsement to the SDGs, giving a considerable fillip to Agenda 2030. India is already taking significant strides towards the attainment of SDGs. India's 'National Development Agenda' outlines the measures, which the Government is taking on issues like poverty, sustainable growth, health, nutrition, gender equality and quality education, among several others.

Government of Jammu & Kashmir is fully committed to promote sustainable and inclusive economic growth and social development for achievement of Sustainable Development Goals during next ten years. Collective measures like, increase in investment, strengthening development infrastructure, encouraging industrialization & private partnership, building social security & access to basic services, environment protection, improving safety & security are required to be taken that can impact the larger benefits for future generation. All UT government officials/stakeholders are encouraged to use this document as a reference document and accordingly implement schemes and programmes to ensure that benefits of the development (programmes/ schemes) reach to the last mile, be it basic necessities of life like, food security, employment guarantee, income security, health & nutrition, education, water & power, connectivity, safety & security, environment protection, etc. which is the ultimate aim of the SDGs. I appeal each one in the UT to be part of this journey to a common destination – an inclusive & prosperous Union Territory.

I congratulate Planning Development & Monitoring Department, J&K, who have coordinated with the concerned departments and their representatives to achieve this milestone.

I hope all stakeholders in the UT shall lend their full support to the commitment of achievement of Sustainable Development Goals in Jammu & Kashmir.

December 1st, 2020  
Jammu

  
(Baseer Ahmad Khan)



**Chief Secretary  
Jammu & Kashmir**

**(B.V.R. Subrahmanyam)**

## **MESSAGE**

I am happy to share the maiden document of the Government of Jammu & Kashmir---“**SDG PROGRESS REPORT -2020**”, compiled by the Planning, Development & Monitoring Department to assess our progress towards achieving the United Nation's Sustainable Development Goals (SDGs). SDGs, adopted by the global community in 2015, have become the guiding force for the advancement of the socio- economic development of people and the ecological surveillance of our planet.

The SDG progress Report – 2020 is based on the National Indicator Framework (NIF), created by the Ministry of Statistics & Programme Implementation (MoSPI), Government of India. This document gives an insight into the current standing of Jammu and Kashmir viz-a-viz national averages and accordingly, forecasts targets towards fulfilling the commitment to achieving Sustainable Development Goals.

The Government of Jammu & Kashmir is fully committed to promoting Sustainable and inclusive economic growth and social development as envisaged under the SDGs. In this regard, a plethora of schemes/ programmes are being implemented to improve economic, social and environmental indicators. Efforts are also afoot to increase private investment, industrialization, development of infrastructure, providing social security, equitable access to basic services and environment protection.

The efforts of the Secretary, Planning Development & Monitoring Department and his team members are commendable for putting together inputs form various departments into an integrated document. I believe that this document will serve as a useful guide for Administrative Secretaries and District Development Commissioners for planning the implementation of various schemes/ programmes and reviewing their progress in order to achieve the respective SDGs.

**(B.V.R. Subrahmanyam)**



**SIMRANDEEP SINGH, IAS**



**Secretary,  
Planning Development &  
Monitoring Department, J&K.**

## **PREFACE**

### **About SDGs**

We are aware of the SDGs and their importance for the world. These Goals are a comprehensive list of targets integrating social, economic and environmental dimensions of development. They are universal in nature which necessitates comprehensive and participatory planning in order to achieve the targets. Individually, the countries are responsible for steering the journey and reviewing the progress made in implementing the goals.

The 17 SDGs and associated 169 targets came into force with effect from 01st January, 2016. A set of 232 distinct global indicators were identified by the United Nations for monitoring the progress of Global SDGs and associated targets. The SDGs are not legally binding, but have become de-facto international obligations and have potential to reorient domestic spending priorities of the countries during the next 15 years.

In India, the Central Ministry of Statistics and Programme Implementation (MoSPI), prepared a basic document called the National Indicator Framework (NIF) on Sustainable Development Goals in 2019 which covered a list of targets and their corresponding indicators. In March 2020, MoSPI came up with version 2.0 which contained 297 indicators and comparative data of 2015-16 and 2018-19, wherever possible. In fact, said version-2.0 has also been upgraded and another version-SDG NIF (Version - 2.1) was released on 29th June 2020.

### **Jammu and Kashmir–Specific**

The Government of Jammu & Kashmir followed a step-by-step process of adopting SDGs. A High Level Committee for implementing SDGs was set up under the watch of Chief Secretary, J&K. All Administrative Secretaries of major Departments are members of the said Committee. The SDG Indicator Framework of Jammu & Kashmir has thrice been revised, based on NIF-2019, NIF-2020 version 1.0 and finally NIF-2020 version 2.1, in consultation with NITI Aayog and MoSPI. J&K UT Indicator Framework version 2.1 covers 15 Goals, 81 Targets and 206 Indicators which also include 23 J&K specific indicators. All the indicators are linked to availability of basic amenities to citizens which include education, health, food, nutrition, housing, sanitation, water, electricity, viz-a-viz economic growth & development, protection of environment, social security & good governance. Similarly, District Indicator Framework (DIF) of Union Territory of Jammu & Kashmir on Sustainable Development Goals has also been conceptualized.

The progress achieved by the UT of Jammu & Kashmir on the indicators has been compiled into a booklet **"SDG PROGRESS REPORT - 2020"** based on the available data for 2015-16 and 2018-19. It is a maiden attempt in this regard. Suggestions/inputs from the Administrative departments are welcome for bringing improvement in this document in the subsequent editions. The publication shall be updated annually and the structure of the publication shall also witness changes, where required.

I believe that this document will serve as a useful guide for Administrative Secretaries at the UT level and the District Development Boards / Councils at the district level for planning and monitoring the implementation of various schemes/ programmes related to SDGs. I hope all stakeholders in the UT shall lend their full support to the commitment of achieving the Sustainable Development Goals in Jammu & Kashmir. I expect that the districts would also come up with similar reports.

Last but not the least, I would like to put on record my appreciation for the team working in the SDG Unit for framing this maiden document, which shall go a long way in guiding and making further headways in achievement of Sustainable Development Goals in the Union Territory of J&K.

**Jammu**



**(Simrandeep Singh)**

# INTRODUCTION

## SUSTAINABLE DEVELOPMENT GOALS

### SDGS: A GLOBAL PERSPECTIVE

The Sustainable Development Goals (SDGs) are an ambitious commitment by world leaders which set out a universal and an unprecedented agenda embracing economic, environmental and social aspects of the well-being of societies. With the aim of taking forward the success of Millennium Development Goals, the United Nations (UN) General Assembly, in its 70th Session held on 25th September 2015, adopted the document titled "Transforming our World: the 2030 Agenda for Sustainable Development" consisting of 17 Sustainable Development Goals (SDGs) and associated 169 targets. 193 Member States including India were signatories to the agenda.

The SDGs are a comprehensive list of global goals integrating social, economic and environmental dimensions of development. Further, the SDGs are universal (for all nations - developed, developing and least-developed), interconnected and indivisible and hence necessitate comprehensive and participatory approaches in bringing everybody together so that no one is left behind. Countries are primarily responsible for following up and reviewing the progress made in implementing the goals and targets at the national level till 2030.

The 17 SDGs and associated 169 targets came into force with effect from 01st January, 2016. A set of 232 distinct global indicators were identified by the United Nations for monitoring the progress of Global SDGs and associated targets. The SDGs are not legally binding, but have become de-facto international obligations and have potential to reorient domestic spending priorities of the countries during the next 15 years. Countries are expected to take ownership and establish a national framework for achieving these goals. Implementation and success will depend on countries own sustainable development policies, plans and programmes. The 2030 Agenda also underscored the fact that quality, reliable and disaggregated data would be needed for measurement of progress on the targets and for ensuring that "No One is Left Behind".

### SDGS: AN INDIAN PERSPECTIVE

India is committed to implementing the SDGs based on the nationally defined indicators responding to national priorities and needs. In this effort, towards integrating SDGs into country's on-going national and sub-national policies and programmes, at national level, NITI Aayog has mapped the SDGs with centrally sponsored programmes of concerned Central Ministries/Departments. Further, Ministry of Statistics and Programme Implementation (MoSPI) developed a National Indicator Framework (NIF) consisting of 306 national indicators along with identified data sources and periodicity following due consultation process with concerned Ministries/Departments, UN Agencies and other stakeholders. Presently, at national level, data flow from official statistical system and nearly 50 data source Ministries/Departments are involved in the process of providing data on SDGs. MoSPI coordinates with these line Ministries for institutionalizing the data flow for SDG indicators. NIF is the backbone of monitoring of SDGs at the national level and provides appropriate direction to the policy makers and the implementing agencies of various schemes and programmes. Keeping in view the localization of SDGs, States/UTs were also required to carry out similar exercises at State and District level.

The spectrum of the 17 SDGs and 169 targets range from poverty eradication, human health and sanitation to urban settlements and to safeguarding the global ecosystems on which humanity depends for its survival. The 17 Sustainable Development Goals form a cohesive and integrated package of global aspirations, the world commits to achieve by 2030. Building on the accomplishments of their predecessors - the Millennium Development Goals (MDGs), the SDGs address the most pressing global challenges of current time, calling upon collaborative partnerships

across and between countries to balance the three dimensions of sustainable development - economic growth, environmental sustainability, and social inclusion. The 17 SDGs are as under:-

- Goal 1:** End poverty in all its forms everywhere.
- Goal 2:** End hunger, achieve food security and improved nutrition, and promote sustainable agriculture.
- Goal 3:** Ensure healthy lives and promote well-being for all at all ages.
- Goal 4:** Ensure inclusive and equitable quality education and promote lifelong learning opportunities for all.
- Goal 5:** Achieve gender equality and empower all women and girls
- Goal 6:** Ensure availability and sustainable management of water and sanitation for all.
- Goal 7:** Ensure access to affordable, reliable, sustainable, and modern energy for all.
- Goal 8:** Promote sustained, inclusive and sustainable economic growth, full and productive employment and decent work for all.
- Goal 9:** Build resilient infrastructure, promote inclusive and sustainable industrialization and foster innovation.
- Goal 10:** Reduce inequality within and among countries.
- Goal 11:** Make cities and human settlements inclusive, safe, resilient and sustainable.
- Goal 12:** Ensure sustainable consumption and production patterns.
- Goal 13:** Take urgent action to combat climate change and its impacts.
- Goal 14:** Conserve and sustainably use the oceans, seas and marine resources for sustainable development.
- Goal 15:** Protect, restore and promote sustainable use of terrestrial ecosystems, sustainably manage forests, combat desertification, halt and reverse land degradation and halt biodiversity loss.
- Goal 16:** Promote peaceful and inclusive societies for sustainable development, provide access to justice for all and build effective, accountable and inclusive institutions at all levels.
- Goal 17:** Strengthen the means of implementation and revitalize the global partnership for sustainable development.

## **SDGS: PROGRESS IN INDIA**

The Government of India is strongly committed to Agenda 2030, including the Sustainable Development Goals. The Prime Minister of India in his statement at the Sustainable Development Summit in New York on 25<sup>th</sup> September 2015 strongly affirmed India's commitment to Agenda 2030 and the SDGs. He drew attention to the fact that we live in "an age of unprecedented prosperity, but also unspeakable deprivation around the world" and pointed out that "much of India's development agenda is mirrored in the Sustainable Development Goals". Further, he has reiterated the importance of the SDGs at global level, such as at G-20 meetings. The Parliament of India has taken initiatives to propel the SDG agenda forward. India has provided strong endorsement to the SDGs, giving a considerable fillip to Agenda 2030.

India is already taking significant strides towards the attainment of SDGs. India's 'National Development Agenda' outlines the measures, which the Government is taking on issues like poverty, sustainable growth, health, nutrition, gender equality and quality education, among several others.

The key actions undertaken in India are engaging of NITI Aayog, MoSPI and States/UTs for spearheading the work on SDGs and framing of National Indicator Framework and annual SDG Index. Government of India has also constituted a High Level Steering Committee (HLSC) on SDGs under the Chairmanship of Chief Statistician of India (CSI) & Secretary, MoSPI with members from NITI Aayog, Ministry of Home Affairs, Ministry of Health and Family Welfare, Ministry of

Environment, Forest and Climate Change (MoEFCC), Ministry of Finance and MoSPI to periodically review and refine the NIF. HLSC has revised the NIF based on consultations with line ministries, departments, UN experts and recommendations of the six sectoral committees on SDGs, constituted by the MoSPI, for data related matters on National Indicator Framework and Global Indicator Framework (GIF). NITI Aayog has also come up with SDG Index 2018 & 2019 whereunder States/UTs have been ranked on the basis of their performance on these indicators and Goals.

Development of indicators is an evolving process; hence the indicators in the National Indicator Framework (NIF) sometimes undergo change as per availability of data and further development of Official Statistics System. Considering the suggestions of various data source Ministries/departments, Sectoral Committees for SDGs and also due to launch of some new surveys, some changes have been made by the MoSPI in the original NIF. Accordingly, the SDG NIF (version 2.0) was developed and released by MoSPI on **31st March 2020**. Second Version of **NIF has 297 indicators** against 306 earlier indicators. MOSPI requested all States/UTs to update their Indicator Framework on SDGs in light of the changes made in the Version 2.0 of NIF and share it after due approval. The information was sought at the earliest since MoSPI, GoI, has to release the report on 29<sup>th</sup> June 2020, National Statistical Day.

### **SDGs: PROGRESS IN JAMMU & KASHMIR**

The state government has followed a rigorous and logical step-by-step process of adopting SDGs – including goal setting, target prioritization, indicator selection, scheme analysis, and developing a monitoring system.

On the instructions of MoSPI & NITI Aayog, GoI, PD&MD, J&K initiated framing of Union Territory Indicator Framework (UTIF) on Sustainable Development Goals on the analogy of National Indicator Framework (NIF). Government of Jammu & Kashmir constituted a State Level Committee for SDGs under the Chairmanship of Chief Secretary, J&K with Administrative Secretaries of Major Departments as members.

The UT Indicator Framework was prepared in consultation with NITI Aayog and MoSPI, GoI. J&K UTIF covers **15 Goals, 84 Targets and 226 Indicators**. All these indicators are connected with availability of basic amenities to the general public which include education, health, food, nutrition, housing, sanitation, water, electricity, viz-a-viz economic growth & development, protection of environment, social security & good governance. The UTIF was shared with the NITI Aayog/ MOSPI on 24<sup>th</sup> October, 2019 for preparation of Dash Board. After finalisation of Dash Board, the information on all the indicators shall be uploaded regularly for monitoring and keeping track on the achievements/performance of SDG Indicators.

Similarly, District Indicator Framework (DIF) of Union Territory of Jammu & Kashmir on Sustainable Development Goals was also prepared by PD&MD as a subset of Union Territory Indicator Framework (UTIF) for monitoring the progress on SDG Goals. J&K DIF covers **15 Goals, 62 Targets and 166 Indicators**. The DIF also stands shared with the NITI Aayog/ MOSPI for its inter-linkage with UT Dash Board. All the districts shall be able to monitor the progress on SDG indicators as well as Targets and Goals and ranking of Districts shall be made on the progress achieved on these parameters.

In light of the revised SDG NIF (Version- 2.0) released by MoSPI, GoI, on 31<sup>st</sup> March 2020, the UT Indicator Framework of Jammu & Kashmir on SDGs was updated and necessary data was also filled in, wherever possible. Based on the availability of data, **191 indicators covering 79 targets were shortlisted for Jammu & Kashmir SDG Indicator Framework in the first instance**. These 191 indicators include 26 UT specific/localized indicators.

The updated UT Indicator Framework Jammu & Kashmir approved by Chief Secretary (Chairman, State level Committee on SDGs) was forwarded to MOSPI, GoI, NITI Aayog, GoI, on 20<sup>th</sup> May 2020.

Meanwhile on 29<sup>th</sup> June 2020, SDG NIF (Version- 2.0) was upgraded by MoSPI, GoI, and fresh version SDG NIF (Version - 2.1) was released. The UT Indicator Framework of Jammu & Kashmir on SDGs was updated accordingly and necessary data was also filled in, wherever possible. Based on the availability of data, **206 indicators covering 81 targets have been shortlisted for Jammu & Kashmir SDG Indicator Framework in the first instance.** These 206 indicators include 23 UT specific/localized indicators. The majority of the data has been taken from national publications and portals and for state specific indicators from state sources.

The Goal-wise detail of indicators is given below:-

UT INDICATOR FRAMEWORK on SUSTAINABLE DEVELOPMENT GOALS based on NIF Version 2.1					
S. No	SUSTAINABLE DEVELOPMENT GOALS (SDG)	NIF INDICATORS		J&K UT INDICATORS VERSION 2.0	
		VERSION 1.0	VERSION 2.1	NO OF INDICATORS	NO OF TARGETS
1	2	3	4	5	6
1	SDG GOAL - 1 END POVERTY IN ALL ITS FORMS EVERYWHERE	19	21	18	5
2	SDG GOAL - 2 END HUNGER, ACHIEVE FOOD SECURITY AND IMPROVED NUTRITION AND PROMOTE SUSTAINABLE AGRICULTURE	19	19	18 (5)	6
3	SDG GOAL - 3 ENSURE HEALTHY LIVES AND PROMOTE WELL BEING FOR ALL AT ALL AGES	41	42	35 (2)	11
4	SDG GOAL - 4 ENSURE INCLUSIVE AND EQUITABLE QUALITY EDUCATION AND PROMOTE LIFELONG LEARNING OPPORTUNITIES FOR ALL	20	19	16 (2)	6
5	SDG GOAL - 5 ACHIEVE GENDER EQUALITY AND EMPOWER ALL WOMEN AND GIRLS	29	29	22 (2)	6
6	SDG GOAL - 6 ENSURE AVAILABILITY AND SUSTAINABLE MANAGEMENT OF WATER AND SANITATION FOR ALL	19	16	10	5
7	SDG GOAL - 7 ENSURE ACCESS TO AFFORDABLE, RELIABLE, SUSTAINABLE AND MODERN ENERGY FOR ALL	5	5	3	2
8	SDG GOAL - 8 PROMOTE SUSTAINED, INCLUSIVE AND SUSTAINABLE ECONOMIC GROWTH, FULL AND PRODUCTIVE EMPLOYMENT AND DECENT WORK FOR ALL	40	32	26 (2)	11
9	SDG GOAL - 9 BUILD RESILIENT INFRASTRUCTURE, PROMOTE INCLUSIVE AND SUSTAINABLE INDUSTRIALISATION AND FOSTER INNOVATION	18	16	5 (1)	3
10	SDG GOAL - 10 REDUCED INEQUALITIES WITHIN AND AMONG COUNTRIES	7	9	7 (2)	3
11	SDG GOAL - 11 MAKE CITIES AND HUMAN SETTLEMENTS INCLUSIVE, SAFE, RESILIENT AND SUSTAINABLE	16	15	8 (1)	5
12	SDG GOAL - 12 ENSURE SUSTAINABLE CONSUMPTION & PRODUCTION PATTERNS	17	15	9 (5)	3
13	SDG GOAL - 13 TAKE URGENT ACTION TO COMBAT CLIMATE CHANGE AND ITS IMPACTS	4	5	2 (1)	1
14	SDG GOAL - 14 CONSERVE AND SUSTAINABLY USE THE OCEANS, SEAS AND MARINE RESOURCES FOR SUSTAINABLE DEVELOPMENT	13	11	NA	NA
15	SDG GOAL - 15 PROTECT, RESTORE AND PROMOTE SUSTAINABLE USE OF TERRESTRIAL ECOSYSTEMS, SUSTAINABLY MANAGE FORESTS, COMBAT DESERTIFICATION AND HALT AND REVERSE LAND DEGRADATION AND HALT BIODIVERSITY LOSSES	21	16	11	6
16	SDG GOAL - 16 PROMOTE PEACEFUL AND INCLUSIVE SOCIETIES FOR SUSTAINABLE DEVELOPMENT, PROVIDE ACCESS TO JUSTICE FOR ALL AND BUILD EFFECTIVE, ACCOUNTABLE AND INCLUSIVE INSTITUTIONS AT ALL LEVELS	18	19	16	8
17	SDG GOAL - 17 STRENGTHEN THE MEANS OF IMPLEMENTATION AND REVITALIZE THE GLOBAL PARTNERSHIP FOR SUSTAINABLE DEVELOPMENT	0	13	NA	NA
	TOTAL	306	302	206 (23)	81

Figures in Brackets are State Specific Indicators.

The progress achieved by the UT of Jammu & Kashmir on these 206 indicators has been compiled into a booklet "**SDG PROGRESS REPORT - 2020**" based on the available data for 2015-16 and 2018-19. This is the first attempt in this regard as such there may be some shortcomings in the data/presentation. Suggestions/inputs from the Administrative departments are welcome for bringing improvement in this document in the forthcoming editions.

The information shall be collected periodically and publication shall be updated annually and the structure of the publication shall also witness changes with time e.g., number of indicators/ targets, change in existing indicators based on the data availability from various reliable sources.

\*\*\*\*\*



# UNION TERRITORY OF JAMMU & KASHMIR

## SDG PROGRESS REPORT - 2020



**PLANNING DEVELOPMENT AND MONITORING DEPARTMENT,  
JAMMU & KASHMIR GOVERNMENT**



## END POVERTY IN ALL ITS FORMS EVERYWHERE

# NO POVERTY



Poverty is a multidimensional phenomenon. It not only indicates the lack of income or access to resources but also manifests in the form of diminished opportunities for education, hunger and malnutrition, social decimation and the inability to participate in decision making processes. The first goal of the SDG framework discusses the target of eradicating the strongest barrier against human progress – poverty; not just in monetary terms but in all its forms by 2030.


This Goal has 7 targets to measure the progress in ending poverty in all its forms from everywhere at national level. A total of 21 indicators have been identified at national level to measure & monitor the progress of these targets and data is available for 19 indicators.


Jammu & Kashmir has identified 18 indicators covering 5 targets to measure & monitor the progress of these targets.

The strategy to achieve this goal is to provide employment guarantee to the unemployed manual workers, increase social protection coverage besides increasing access/coverage to basic amenities.





## END POVERTY IN ALL ITS FORMS

 10.35 per cent population (11.54 Rural & 7.20 Urban) was living below the national poverty line in J&K in 2011-12 as against 21.92 percent at National Level.


 87.30 percent persons were provided employment under MGNREGA in 2018.


 About 90 per cent population receive social protection benefits under Pradhan Mantri Matritva Vandana Yojna (PMMVY) in 2018-19.

 56.09 per cent population was getting safe drinking water within their premises through piped water supply in rural areas of Jammu & Kashmir in 2017 which has increased to 60.22 per cent in 2018-19 as against 40.58 per cent at National level.

 32.84 percent of population (Rural households) had access to Sanitation - IHHL in Jammu & Kashmir during 2015-16 which increased to 100.00 percent during 2018-19 as against 99.03 at National Level.

 The access to electricity has been made universal.

 1,937 Self Help Groups (SHGs) were provided bank credit linkages during 2018-19.

 33,413 (24,844 R + 8,569 U) poor families have been provided homes in Jammu & Kashmir up to 20<sup>th</sup> August 2020.

 Per Day Per Capita Income of the State is Rs. 214.00 i.e. (Rs. 78,110 Per Year) at Constant Prices in 2017-18.

**SDG GOAL – 1 : END POVERTY IN ALL ITS FORMS EVERYWHERE**

S. No	INDICATOR	VALUE OF INDICATOR			
		UNIT	YEAR	JK VALUE	ALL INDIA VALUE
<b>TARGET 1.1 By 2030, eradicate extreme poverty for all people everywhere, currently measured as people living on less than \$1.25 a day</b>					
1	1.1.1 : Proportion of population living below the national poverty line, <i>(Source: NITI Aayog)</i>	Percentage	2011-12	10.35	21.92
2	1.1.2: Poverty Gap Ratio <i>(Source: NITI Aayog)</i>	Percentage	2011-12	Rural :1.91 Urban: 0.95	Rural:5.05 Urban:2.70
<b>Target 1.3: Implement nationally appropriate social protection systems and measures for all, including floors, and by 2030 achieve substantial coverage of the poor and the vulnerable</b>					
3	1.3.1: Percentage of households with any usual member covered by a health scheme or health insurance, <i>(Source: Insurance Regulatory and Development Authority (IRDA))</i>	Percentage	2015-16	Overall:4.20 Rural: 3.40 Urban: 5.90 <i>(NFHS-4)</i>	Overall: 28.70 Rural: 29.00 Urban: 28.20 <i>(NFHS-4)</i>
			2020-21 <i>(State Data)</i>	100	NA
4	1.3.2: Number of Beneficiaries under Integrated Child Development Scheme (ICDS) <i>(Source: ICDS Annual REPORT of MoWCD)</i>	Number in Lakhs	2015-16	Overall: 3.87 Children :2.95 P & L Mothers: 0.92	Overall: 1021.31 Children :828.79 P & L Mothers: 192.52
			2018-19	Overall: 9.58 Children :7.98 P & L Mothers: 1.60	Overall : 875.61 Children:703.74 P & L Mothers: 171.87
5	1.3.3: Persons provided employment as a percentage of persons who demanded employment under Mahatma Gandhi National Rural Employment Guarantee Act(MNREGA) <i>Source: RD &amp; PRI (MGNREGA Portal)</i>	Percentage	2015-16	88.40	85.50
			2018-19	87.30	85.20
6	1.3.4: Number of Self Help Groups (SHGs) provided bank credit linkage during the reference year. <i>Source: Finance Deptt. (NABARD MICROFINANCING IN INDIA)</i>	Number of SHGs	2016-17	3,389	18.98 Lakhs
			2018-19	1,937	26.98 Lakhs
7	1.3.5: Proportion of population (out of total eligible population) receiving social protection benefits under PradhanMantriMatritvaVandanaYojana (PMMVY) <i>Source: Social Welfare Development (Annual Report of PMMVY)</i>	Percentage	2017-18	90.74	91.66
			2018-19	89.60	92.17
8	1.3.6: Number of senior citizens provided institutional assistance through Old Age Homes/ Day care centers funded by Government <i>Source: Social Welfare Development (Social Justice &amp; Empowerment)</i>	Number	2015-16	0	22,920
			2018-19	0	16,375
<b>Target 1.4: By 2030, ensure that all men and women, in particular the poor and the vulnerable, have equal rights to economic resources, as well as access to basic services, ownership and control over land and other forms of property, inheritance, natural resources, appropriate new technology and financial services, including microfinance</b>					
9	1.4.1. Percentage of population getting safe and adequate drinking water within premises through Pipe Water Supply (PWS) (RURAL) <i>Source: PHE,I&amp;FC (Ministry of Jal Shakti)</i>	Percentage ( Rural)	2015-16	56.09	35.76
			2018-19	60.22	40.58

**SDG GOAL – 1 : END POVERTY IN ALL ITS FORMS EVERYWHERE**

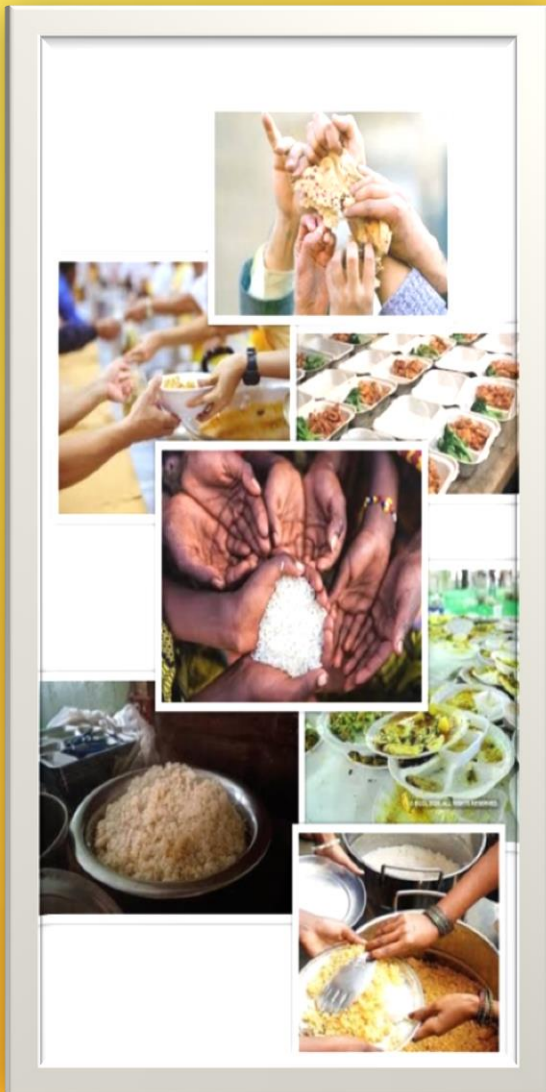
S No	INDICATOR	VALUE OF INDICATOR			
		UNIT			UNIT
10	1.4.2: Proportion of population (Urban) living in households with access to safe drinking water (improved drinking water) (URBAN) <i>Source: NFHS 4/ PHE, I&amp;FCJ</i>	Percentage	2015-16	97.90	91.10
			2018-19	N.A	N. A
11	1.4.3: Percentage of Households electrified, <i>Source: PDD (SAUBHAGYA DASHBOARD/ Ministry of Power)</i>	Percentage	Oct. 2017	Overall: 84.57 Rural : 80.67 Urban : 97.17	Overall : 88.34 Rural : 85.92 Urban : 97.88
			31 <sup>st</sup> March 2019	Overall: 100 Rural : 100.00 Urban : 100.00	Overall: 99.99 Rural: 99.99 Urban: 100.00
12	1.4.4: Proportion of homeless population to total population, (HOMELESS HOUSEHOLDS) <i>Source: H&amp;UDD/ RD&amp;PRD (CENSUS-ORGI)</i>	Percentage	2011	Overall: 0.15 Rural: 0.09 Urban: 0.32	Overall: 0.15 Rural: 0.10 Urban: 0.25
13	1.4.4.a: Proportion of households living in Katcha Houses (RURAL + URBAN) <i>Source: Rural Development Deptt&amp; H&amp;UDD</i>	Percentage	2015-16 (SECC Data)	Rural: 10.68 Urban: 1.66	NA
			2019-20	Rural: 9.31 Urban: NA	NA
14	1.4.5: Number of accounts (including Deposit and credit accounts) of scheduled commercial banks per 1000 Population <i>Source: Finance (RBI)</i>	Number of Accounts/ 1000 population	2015-16	1416.84	1413.31
			2018-19	1002.80	1490.66
15	1.4.6: Number of telephone subscriptions as percentage of total population <i>Source: IT Deptt (DoT/TRAI)</i>	Percentage	2015-16	80.02	83.40
			2018-19	89.43	90.10
16	1.4.7: Proportion of households having access to toilet facility (Urban & Rural), <i>Source: H&amp;UDD, RDD (Ministry of Jal Shakti 2015-16, MoSPI&amp; SBM Dashboard 2019-20) (*NFHS-4)</i>	Percentage	2015-16	Urban: 66.20* Rural: 32.84	Urban: 70.30* Rural: 50.90
			2018-19	Urban: 98.28 Rural : 100.00	Urban: 100.00 Rural : 99.03
<b>1.5 By 2030, build the resilience of the poor and those in vulnerable situations and reduce their exposure and vulnerability to climate-related extreme events and other economic, social and environmental shocks and disasters</b>					
17	1.5.1: Number of deaths attributed to extreme climate per 100,000 population <i>Source: Revenue/ Disaster Management (Annual Report, Ministry of Home Affairs)</i>	Number per Lakh	2015-16	0.16	0.11
			2017-18	0.05	0.16
<b>1.a. Ensure significant mobilization of resources from a variety of sources, including through enhanced development cooperation, in order to provide adequate and predictable means for developing countries, in particular least developed countries, to implement programmes and policies to end poverty in all its dimensions</b>					
18	1.a.2: Proportion of total government spending on essential services (education, health and social Welfare) <i>Source: DES, J&amp;K, /NAD, NSSO</i>	Percentage	2015-16	22.67 ( 5.87 Health+ 14.11 Edu + 2.69 Social Protection)	29.87 ( 4.82 Health+ 17.93 Edu + 7.12 Social Protection)
			2018-19	25.26 (5.38 Health+ 15.49 Edu + 4.39 Social Protection)	29.47 (4.91 Health+ 17.36 Edu + 7.19 Social Protection)

2 ZERO HUNGER



## END HUNGER, ACHIEVE FOOD SECURITY AND IMPROVED NUTRITION AND PROMOTE SUSTAINABLE AGRICULTURE

# Zero Hunger



Malnutrition remains a great barrier to human and economic development and it has its own hidden impacts and costs. This goal aims to end all forms of hunger and malnutrition by 2030, making sure all people especially children has access to sufficient and nutritious food all year around. Realization of this goal means taking substantial efforts in formulating resilient agricultural practices in order to augment food production as well as productivity, substantial means of food distribution, access to technology and well-functioning markets.

The Goal has 8 targets to measure the availability of food, improvement in nourishment and promotion of sustainable agriculture. A total of 19 indicators have been identified at national level to measure & monitor the progress of these targets and data is available for all 19 indicators.

Jammu & Kashmir has identified 18 indicators covering 6 targets to measure & monitor the progress of these targets/indicators. 6 state specific indicators have been incorporated in the 18 indicators.

The strategy to achieve this goal is to augment the food production and productivity, increase coverage under Targeted Public Distribution System (TPDS) besides encouraging high yielding varieties and adoption of cash crops.



## ACHIEVE FOOD SECURITY AND IMPROVED NUTRITION AND PROMOTE SUSTAINABLE AGRICULTURE



Agriculture Productivity of Wheat has increased from 1933 KGs in 2015-16 to 2329 KGs in 2018-19 and that of Rice 2125 KGs in 2015-16 to 2353 KGs in 2018-19.



The coverage of beneficiaries under TPDS is 100 per cent (123.77 lakh persons).



The Export of Horticulture produce (Fresh+ Dry) has increased from by 16.27 % in 2015-16 (from 12.72 L MTs to 14.79 LMTs) and 8.95 % in 2018-19 (from 19.78 LMTs to 21.55 L MTs) in 2018-19.



About 1 percent increase has been registered in Value of Horticulture Produce (Fresh fruits/ Dry Fruits) in Jammu & Kashmir during 2018-19



Contribution of Horticulture Produce in the Agriculture sector is about 51 percent during 2018-19.



10.26 lakh farmers have been issued Soil Health Cards during 2017-19.



An expenditure of 2.26 percent has been made in R&D in Agriculture to GVA in Agriculture in 2018-19.

**SDG GOAL -2- END HUNGER, ACHIEVE FOOD SECURITY AND IMPROVED NUTRITION AND PROMOTE SUSTAINABLE AGRICULTURE**

S. No	INDICATOR	VALUE OF INDICATOR			
		UNIT	YEAR	JK VALUE	ALL INDIA VALUE
<b>2.1 By 2030, end hunger and ensure access by all people, in particular the poor and people in vulnerable situations, including infants, to safe, nutritious and sufficient food all year round</b>					
1	2.1.1: Percentage of children aged under 5 years who are underweight, Source: (Ministry of Health & Family Welfare, NFHS )	Percentage	2015-16	Overall: 16.60 Rural: 16.50 Urban: 17.00	Overall: 35.80 Rural: 38.30 Urban: 29.10
2	2.1.2: Proportion of beneficiaries covered under National Food Security Act 2013, Source: Food, Consumer Affairs & Public Distribution	Percentage	2015-16	100.00 (123.77 LACS)	95.18
			2018-19	100.00 (123.77 LACS)	97.62
<b>2.2 By 2030, end all forms of malnutrition, including achieving, by 2025, the internationally agreed targets on stunting and wasting in children under 5 years of age, and address the nutritional needs of adolescent girls, pregnant and lactating women and older persons</b>					
3	2.2.1: Percentage of children under age 5 years who are stunted, Source: NFHS-4	Percentage	2015-16	Overall: 27.40 Rural:28.80 Urban: 23.00	Overall: 38.40 Rural:41.20 Urban: 31.00
4	2.2.2: Percentage of children under age 5 years who are wasted, Source: NFHS-4	Percentage	2015-16	Overall: 12.10 Rural:11.00 Urban: 16.10	Overall: 21.00 Rural:21.50 Urban: 20.00
5	2.2.2.a: Proportion of Low Birth Weight babies among newborns Source: Health Management Information System (HMIS) <b>(UT Specific Indicator)</b>	Percentage	2015-16	5.93	NA
			2018-19	5.37	NA
6	2.2.3: Percentage of women whose Body Mass Index is below normal (BMI < 18.5 kg/m <sup>2</sup> ), Source: Ministry of Health & Family Welfare (NFHS)	Percentage	2015-16	Overall:12.10 Rural: 14.10 Urban:7.70	Overall:22.90 Rural: 26.70 Urban:15.50
7	2.2.4: Percentage of pregnant women age 15 - 49 years who are anemic (<11.0g/dl) Source: NFHS-4	Percentage	2015-16	Overall: 47.50 Rural: 49.00 Urban:43.60	Overall 50.40 Rural: 52.20 Urban: 45.80
			2018-19	Overall: 22.60	NA
8	2.2.5 : Percentage of children age 6-59 months who are anemic (< 11.0g/dl), Source: Ministry of Health & Family Welfare (NFHS)	Percentage	2015-16	Overall: 54.50 Rural:55.60 Urban: 51.00	Overall: 58.60 Rural:59.50 Urban: 56.00
			2018-19	Overall: 25.80	NA
<b>2.3 By 2030, double the agricultural productivity and incomes of small-scale food producers, in particular women, indigenous peoples, Family farmers, pastoralists and fishers, including through secure and equal access to land, other productive resources and inputs, knowledge, financial services, markets and opportunities for value addition and non-farm employment</b>					
9	2.3.1: Agriculture productivity of wheat & rice (Yield in Kg per hectare) Source: Agriculture Prod. Deptt/ DES	Percentage	2015-16	2125.08 (Kgs) Rice per Hectare 1933.12 Kgs Wheat per Hectare	2400.00 (Kgs) Rice per Hectare 3034.00 Kgs Wheat per Hectare
			2018-19	2352.93 (Kgs) Rice per Hectare 2329.50 Kgs Wheat per Hectare	2638.00 (Kgs) Rice per Hectare 3533.00 Kgs Wheat per Hectare

**SDG GOAL -2- END HUNGER, ACHIEVE FOOD SECURITY AND IMPROVED NUTRITION AND PROMOTE SUSTAINABLE AGRICULTURE**

S. No	INDICATOR	VALUE OF INDICATOR			
		UNIT	YEAR	JK VALUE	ALL INDIA VALUE
10	2.3.4.a : Percentage increase in Horticulture Produce (Fresh Fruits+ Dry Fruits) Source: Horticulture Deptt /DES (UT Specific Indicator) (*State Estimates)	Percentage	2015-16	9.31*	4.14
			2018-19	Minus 0.59*	1.58
11	2.3.4.b: Percentage increase in Value of Horticulture Produce (Fresh fruits/ Dry Fruits) Source: Horticulture Deptt/ DES (UT Specific Indicator)	Percentage	2015-16	8.58	2.32
			2018-19	0.78	0.35
12	2.3.4.c: Contribution of Horticulture Produce in the Agriculture sector Source: DES (UT Specific Indicator)	Percentage	2015-16	54.24	12.82
			2018-19	51.22	13.66
13	2.3.4.d: Saffron Production in the State Source: Agriculture Production Deptt./DES (UT Specific Indicator)	KGs	2015-16	48.06	N.A.
			2018-19	41.00	N.A.
<b>2.4 By 2030, ensure sustainable food production systems and implement resilient agricultural practices that increase productivity and production, that help maintain ecosystems, that strengthen capacity for adaptation to climate change, extreme weather, drought, flooding and other disasters and that progressively improve land and soil quality</b>					
14	2.4.1: Proportion of Net Sown Area to Cultivable Land, DES/Agriculture Prod Deptt Source:(DAC&FW, Ministry of Agriculture & Farmers Welfare)	Percentage	2015-16	70.01 ( 754/1077)	76.82 (139506/ 181603)
15	2.4.2: Percentage of farmers issued Soil Health Card Source: Agriculture Prod. Deptt (Soil Health Card Portal, GOI) {Target/ Distributed}	Percentage	2015-17	98.99	100.00
			2017-19	94.48	94.23
16	2.4.3: Percentage of net area under organic farming Source: Agriculture Production Deptt (Directorate of Economics & Statistics, DAC&FW, Ministry of Agriculture & Farmers welfare)	Percentage	2015-16	0.0181	1.067
			2018-19	0.0178	1.459
<b>2.a Increase investment, including through enhanced international cooperation, in rural infrastructure, agricultural research and extension services, technology development and plant and livestock gene banks in order to enhance agricultural productive capacity in developing countries, in particular least developed countries</b>					
17	2.a.1: Percentage share of expenditure in R&D in Agriculture to GVA in agriculture Source: DES /NAD, CSO	Percentage	2015-16	1.52	0.044
			2018-19	2.26	0.053 (2017-18)
<b>2.c Adopt measures to ensure the proper functioning of food commodity markets and their derivatives and facilitate timely access to market information, including on food reserves, in order to help limit extreme food price volatility</b>					
18	2.c.1: Percentage of Agriculture Mandis enrolled in e-market Source: Agriculture Prod Deptt/ Horticulture Deptt (National Agriculture Market (e-NAM) National Portal for e-trading, GoI,)	Percentage	2016-17	0	6.49
			2017-18	0	3.10



## ENSURE HEALTHY LIVES AND PROMOTE WELL-BEING FOR ALL AT ALL AGES

# Good Health And Well-Being



Good health constitutes good societies which are free from sufferings and deprivations, the most fundamental right. Over the years, significant strides have been made in increasing life expectancy and reducing some of the common killers associated with child and maternal mortality.

Goal 3 aims at enhancing health and well-being related outcomes for all by focusing on a range of issues which affect human life. The focus areas under the goal are maternal and child health, reducing communicable and non-communicable diseases, universal access to medicines and vaccines, and minimizing substance addiction, road traffic injuries and deaths, and environmental/pollution related illnesses.

This Goal has 13 targets to measure the healthy lives and promoting well being for all. A total of 42 indicators have been identified at national level to measure & monitor the progress of these targets out of which data is available for 40 indicators.

Jammu & Kashmir has identified 35 indicators covering 11 targets to measure & monitor the progress of these targets.

The strategy to achieve this goal is to enhance basic health infrastructure at all levels including technical manpower and medical equipment to provide improved health care delivery with special focus on Maternal & Child Health, communicable & non-communicable diseases and face upcoming challenging diseases.

### 3 GOOD HEALTH AND WELL-BEING



## ENSURE HEALTHY LIVES AND PROMOTE WELL BEING FOR ALL AT ALL AGES



Maternal Mortality Rate has reduced from 97 in 2014-16 to 96 in 2015-17 in Jammu & Kashmir as compared to 130 in 2014-16 to 122 in 2015-17 at National level.



Institutional deliveries to total deliveries have increased to 95.13 percent in 2018-19 from 94.44 percent in 2015-16 in Jammu & Kashmir.



Under Five Mortality Rate reduced from 28 in 2015 to 22 in 2018 while as at National level it reduced from 43 in 2015 to 32 in 2018.



Neonatal Mortality Rate reduced from 20 in 2015 to 17 in 2018 while as at National level it reduced from 25 in 2015 to 23 in 2018.



75.10 percent of children aged 12-23 months are fully immunized (BCG, Measles and three doses of Pentavalent vaccine) in 2015-16



Percentage of government spending of J&K in health Sector to GDP is 2.97 percent in 2018-19 in comparison to 2.60 percent at National level.



Incidence of Tuberculosis per 1,00,000 population in 2017 was 74 in J&K in comparison to 204 at National Level.



Percentage of government spending of J&K in health Sector to total spending was 5.38 percent in 2018-19.

SDG GOAL -3- ENSURE HEALTHY LIVES AND PROMOTE WELL BEING FOR ALL AT ALL AGES					
S. No	INDICATOR	VALUE OF INDICATOR			
		UNIT	YEAR	JK VALUE	ALL INDIA VALUE
<b>3.1 By 2030, reduce the global maternal mortality ratio to less than 70 per 100,000 live births</b>					
1	3.1.1: Maternal Mortality Ratio (per 1,00,000 live births) <i>Source: (SRS - ORGI)</i> (The states having low MMR have been clubbed into category "Other States" which includes J&K also.)	Ratio (Maternal Deaths per 1 lakh live births)	2014-16	97 (Other States)	130
			2015-17	96 (Other States)	122
2	3.1.2: Percentage of Births attended by Skilled Health Personals (Period 5 Years) <i>Source: Ministry of Health &amp; Family Welfare NFHS</i>	Percentage	2015-16	Overall: 87.50 Rural : 84.90 Urban : 97.70	Overall: 81.40 Rural : 78.00 Urban : 90.00
3	3.1.3: Percentage of births attended by skilled health personnel (1 year) <i>Source: NFHS-4</i>	Percentage	2015-16	90.10	84.40
4	3.1.3.a : Percentage of institutional deliveries to Total deliveries <i>Source: HMIS (UT Specific Indicator)</i>	Percentage	2015-16	94.44	NA
			2018-19	95.13	NA
5	3.1.4: Percentage of women aged 15-49 years with a live birth, for last birth, who received antenatal care, four times or more. (Period 5 years/1 year) <i>Source: Ministry of Health &amp; Family Welfare NFHS</i>	Percentage	2015-16	Overall: 81.30 Rural : 78.70 Urban : 89.20	Overall: 51.20 Rural : 44.80 Urban : 66.40
<b>3.2 By 2030, end preventable deaths of newborns and children under 5 years of age,(with all Countries), aiming to reduce neonatal mortality to at least as low as 12 per 1000 live births and under 5 mortality to at least as low as 25 per 1000 live births.</b>					
6	3.2.1 : Under five mortality rate (per 1,000 live birth) <i>Source: SRS/ ORGI</i>	Rate (Rate per 1000 live births)	2015	Overall: 28.00 Rural : 28.00 Urban : 24.00	Overall:43.00 Rural : 48.00 Urban : 28.00
			2018	Overall: 23.00 Rural : 24.00 Urban : 20.00	Overall:36.00 Rural : 40.00 Urban : 26.00
7	3.2.2: Neonatal mortality rate (per 1,000 live birth) <i>Source: SRS/ORGI</i>	Rate (Rate per 1000 live births)	2015	Overall: 20.00 Rural : 21.00 Urban : 16.00	Overall:25.00 Rural : 29.00 Urban : 15.00
			2018	Overall: 17.00 Rural : 18.00 Urban : 14.00	Overall:23.00 Rural : 27.00 Urban : 14.00
8	3.2.3 : Percentage of children aged 12-23 months fully immunized <i>Source: NFHS-4</i>	Percentage	2015-16	Overall: 75.10 Rural : 72.90 Urban : 81.60	Overall: 62.00 Rural : 61.30 Urban : 63.90
<b>3.3 By 2030, end the epidemics of AIDS, tuberculosis, malaria and neglected tropical diseases and combat hepatitis, water-borne diseases and other communicable diseases</b>					
9	3.3.1 : Number of new HIV infections per 1,000 uninfected population <i>Source: NACO REPORT MOH&amp;FW</i>	Number /1,000	2015	0.02	0.08
			2017	0.02	0.07
10	3.3.2: Tuberculosis incidence per 100,000 population <i>Source: Annual Status Report on TB,MoH&amp;FW(*values as per WHO Global TB Report)</i>	Number / 1 Lakh	2016	72	135 (217* )
			2017	74	138 (204*)
11	3.3.3 : Malaria incidence per 1,000 population <i>Source: Directorate of National Vector Borne Disease Control Programme, MoH&amp;FW</i>	Number /1,000	2015	0.16	0.92
			2017	0.16	0.64
12	3.3.5: Dengue : Case Fatality Ratio (CFR) (Ratio) <i>Source: MOH&amp;FW</i>	Percentage	2015	0	0.20
			2017	0	0.20
13	3.3.9: The proportion of grade-2 cases amongst new cases of leprosy (in rate per million) <i>Source: NLEP Annual Report (MOH&amp;FW)</i>	Rate per Million	2015-16	5.29	4.60
			2018-19 <i>May2018</i>	0.00	3.74

SDG GOAL -3- ENSURE HEALTHY LIVES AND PROMOTE WELL BEING FOR ALL AT ALL AGES					
SN O	INDICATOR	VALUE OF INDICATOR			
		UNIT	YEAR	JK VALUE	ALL INDIA VALUE
14	3.3.10: HIV Prevalence Rate (in percentage) <i>Source: NACO REPORT (MOH&amp;FW)</i>	Percentage	2015	0.03	0.23
			2017	0.03	0.22
<b>3.4 By 2030, reduce by one third premature mortality from non-communicable diseases through prevention and treatment and promote mental health and well-being</b>					
15	3.4.2: Suicide mortality rate (per 1 lakh Population) <i>Source: Home Affairs (NCRB)</i>	Rate per 1 lakh population.	2015	3.00	10.60
			2018	2.50	10.20
<b>3.5 Strengthen the prevention and treatment of substance abuse, including narcotic drug abuse and harmful use of alcohol</b>					
16	3.5.2: Number of persons treated in de-addiction centers <i>Source: (Social Welfare Deptt/ MOSJE)</i>	Number	2015-16	369	1,46,124
			2018-19	179	77,479
<b>3.6 By 2020, halve the number of global deaths and injuries from road traffic accidents</b>					
17	3.6.1: People killed/ injured in road accidents (per one lakh population) <i>Source: (Home)/ NCRB, Road Statistics of India</i>	Number per lakh population	2015	7.48 Deaths 66.84 Injured	11.81 Deaths 38.31 Injured
			2018	7.34 Deaths 58.50 Injured	11.54 Deaths 33.74 Injured
<b>3.7 By 2030, ensure universal access to sexual and reproductive healthcare services, including for Family planning, information and education, and the integration of reproductive health into national strategies and programmers</b>					
18	3.7.1: Percentage of currently married women (15-49 years) who use any modern Family planning methods, <i>Source: Ministry of Health &amp; Family Welfare/NFHS</i>	Percentage	2015-16	Overall: 46.10 Rural : 42.10 Urban : 56.00	Overall: 47.80 Rural : 46.00 Urban : 51.20
19	3.7.1.a: Total Fertility Rate <i>Source: SRS/ORGI (UT Specific Indicator)</i>	Rate	2015	1.6	2.3
			2018	1.6	2.2
20	3.7.2: Percentage of Women aged 15-19 years who were already mothers or pregnant <i>Source: Ministry of Health &amp; Family Welfare NFHS</i>	Percentage	2015-16	2.90	7.90
21	3.7.3: Percentage of institutional deliveries/Births (period 5 Year/ 1 Year) <i>Source: Ministry of Health &amp; Family Welfare NFHS</i>	Percentage	2015-16	85.60 (5 Year) 89.10 (1 Year)	78.90 (5 Year) 82.60 (1 Year)
22	3.7.4: Percentage of currently married women aged 15-49 years who have their need for family planning satisfied with modern methods <i>Source: Ministry of Health &amp; Family Welfare NFHS</i>	Percentage	2015-16	66.30	71.90
<b>3.8 Achieve universal health coverage, including financial risk protection, access to quality essential health-care services and access to safe, effective, quality and affordable essential medicines and vaccines for all</b>					
23	3.8.1: Percentage of currently married women (15-49 years) who use any modern Family planning methods, <i>Source: Ministry of Health &amp; Family Welfare/NFHS</i>	Percentage	2015-16	Overall: 46.10 Rural : 42.10 Urban : 56.00	Overall: 47.80 Rural : 46.00 Urban : 51.20
24	3.8.2: Percentage of TB cases successfully treated (cured plus treatment completed) among TB cases notified to the national health authorities during a specified period <i>Source: Annual Status Report on TB MoH&amp;FW</i>	Percentage	2015-16	83	84
			2016-17	85	79

**SDG GOAL -3- ENSURE HEALTHY LIVES AND PROMOTE WELL BEING FOR ALL AT ALL AGES**

S. NO	INDICATOR	VALUE OF INDICATOR			
		UNIT	YEAR	JK VALUE	ALL INDIA VALUE
25	3.8.3: Percentage of people living with HIV currently receiving ART among the detected number of adults and children living with HIV	Percentage	2015-16	63	62
			2018-19	77	82
26	3.8.4: <i>Prevalence</i> of hypertension among men and women age 15-49 years <i>Source: Ministry of Health &amp; Family Welfare/(NFHS) MoH&amp;FW</i>	Percentage	2015-16	Male: 9.7 Female:12.30	Male: 11.00 Female:14.80
27	3.8.6: Percentage of women aged 15-49 years who have ever undergone Cervix examinations 2015-16 <i>Source: Ministry of Health &amp; Family Welfare/(NFHS) MoH&amp;FW</i>	Percentage	2015-16	34.5 (38.9 U & 32.7 R)	22.3 (25.3 U &20.7 R)
28	3.8.7: Percentage of women aged 15-49 years and men aged 15-49 years with use of any kind of tobacco <i>Source: Ministry of Health &amp; Family Welfare/(NFHS) MoH&amp;FW</i>	Percentage	2015-16	Male: 38.20 Female: 2.80	Male: 44.50 Female: 6.80
29	3.8.8: Total physicians, nurses and midwives per 10,000 populations. <i>Source: (Publication on Health Force in India by WHO) / Source: Ministry of Health &amp; Family Welfare/(NFHS) MoH&amp;FW</i>	Percentage	2015	13.42	35.80
			2016	15.22	36.40
<b>3.9. By 2030, substantially reduce the number of deaths &amp; illness from hazardous chemicals and Air, Water, Soil pollution and contamination</b>					
30	3.9.1: Mortality Rate attributed to unintentional poisoning per lakh population <i>Source: (NCRB/ORGI)</i>	Rate	2015	0.60	2.10
			2018	0.19	1.64
31	3.9.2: Proportion of Men & Women reporting Asthama 15-49 Years <i>Source: Ministry of Health &amp; Family Welfare/(NFHS) MoH&amp;FW</i>	Percentage	2015	Men: 1.30 Women: 0.90	Men: 1.20 Women: 1.90
<b>3.a Strengthen the implementation of the World Health Organization Framework Convention on Tobacco Control in all countries, as appropriate</b>					
32	3.a.1: Percentage of women aged 15-49 years and men aged 15-49 years with use of any kind of tobacco, <i>Ministry of Health &amp; Family Welfare/(NFHS) MoH&amp;FW</i>	Percentage	2015-16	Male: 38.20 Female: 2.80	Male: 44.50 Female: 6.80
<b>3.c. Substantially increase Health Financing and the recruitment, development, training and retention of the Health Work Force in developing countries, especially in least developed countries and small island developing states.</b>					
33	3.c.1: Total physicians, nurses and midwives per 10,000 population <i>Source: (Publication on Health Force in India by WHO) /Ministry of Health &amp; Family Welfare/(NFHS)</i>	Ratio	2015	13.42	35.80
			2016	15.22	36.40
34	3.c.2: Percentage of government spending (Current & Capital expenditure) in health sector to GDP <i>Source: DES/MoSPI</i>	Percentage	2015-16	2.46	2.38
			2018-19	2.94	2.60
35	3.c.2.a: Percentage of government spending (Current & Capital expenditure) in health sector to Total Spending <i>Source: DES/MoSPI</i>	Percentage	2015-16	5.87	4.82
			2018-19	5.38	4.91



## ENSURE INCLUSIVE AND EQUITABLE QUALITY EDUCATION AND PROMOTE LIFELONG LEARNING OPPORTUNITIES FOR ALL

# QUALITY EDUCATION



Obtaining a quality education is the foundation for human development and creating sustainable development. SDG 4 aims to ensure the completion of Primary & Secondary Education by all Boys and Girls and guaranteeing opportunities for equal access to quality technical & Vocational Education for everyone. The scope of this goal extends beyond access to education to parity, quality, infrastructure, and lifelong learning.

The Goal has 10 targets to measure the inclusive and equitable quality education and promote lifelong learning opportunities. A total of 19 indicators have been identified at national level to measure & monitor the progress of these targets out of which data is available for 14 indicators.

Jammu & Kashmir has identified 16 indicators covering 6 targets to measure & monitor the progress of these targets.

The strategy to achieve this goal is to enhance quality and coverage of education and ensuring access to improved means of learning, equal opportunities and improved learning outcomes.


**4** QUALITY EDUCATION





**ENSURE INCLUSIVE AND EQUITABLE EDUCATION AND PROMOTE LIFELONG LEARNING OPPORTUNITIES FOR ALL**


 NER of J&K stood at 65.74 percent at Primary Level & 54.88 percent at Upper Primary level in 2017-18 as compared to 82.53 percent and 72.62 percent respectively at National Level.


 GER of J&K stood at 30.90 per cent at Territory Education Level in 2018-19 as compared to 28.30 percent at National Level.

 Percentage of trained teacher by education level in J&K was 42.91 at Primary, 56.00 for Upper Primary, 64.64 for Secondary & 73.57 for Higher secondary during 2017-18.

 92.68 percent schools were having drinking water facility in 2017-18 in J&K.

 38.57 percent schools were having access to electricity in 2017-18 in J&K.

 50.68 percent schools were having basic hand washing facilities in 2017-18 in J&K.

 Learning Outcomes: 86.80 percent students at class 3<sup>rd</sup>, 82.25 percent at class 5<sup>th</sup> and 59.75 percent at class 8<sup>th</sup> achieved at least minimum proficiency level in terms of Nationally Defined learning outcomes during 2017-18.

 Gender parity Index at Primary level was 1.03, at Secondary level 1.06, at Higher Secondary level 0.96 and at Territory education level 1.09 during 2018-19.

 Percentage of government spending of J&K in Education Sector to total spending was 15.49 percent in 2018-19.

**SDG GOAL -4- ENSURE INCLUSIVE AND EQUITABLE QUALITY EDUCATION AND PROMOTE LIFELONG LEARNING OPPORTUNITIES FOR ALL**

S. No	INDICATOR	VALUE OF INDICATOR			
		UNIT	YEAR	JK VALUE	ALL INDIA VALUE
<b>4.1 : By 2030,ensure that all girls and boys complete free, equitable and quality primary and secondary education leading to relevant and effective learning outcomes</b>					
1	4.1.1: Net Enrolment Ratio (NER) in Primary & Upper Primary Education (in percentage) <i>Source: School Education Deptt (Ministry of HRD) (U-DISE)</i>	Percentage	2015-16	72.68 Primary 56.45 Upper Primary	87.14 Primary 73.94 Upper Primary
			2017-18	65.74 Primary 54.88 Upper Primary	82.53 Primary 72.62 Upper Primary
2	4.1.2. Adjusted Net Enrolment Ratio in primary, upper primary and secondary education (in ratio per hundred) <i>Source: School Education Deptt(Ministry of HRD) (U-DISE)</i>	Percentage	2015-16	78.83 Primary 65.89 Upper Primary 55.70 Secondary	91.47 Primary 83.46 Upper Primary 62.81 Secondary
			2016-17	68.68 Primary 57.57 Upper Primary 47.10 Secondary	88.05 Primary 82.00 Upper Primary 62.42 Secondary
3	4.1.3. Gross Enrollment Ratio in higher secondary education (in ratio per hundred) <i>Source: School Education Deptt (Ministry of HRD) (U-DISE)</i>	Percentage	2015-16	56.97	55.73
			2017-18	62.22	56.50
4	4.1.4. Percentage of students in grade 3, 5, 8 and 10 achieving at least a minimum proficiency level in terms of nationally defined learning outcomes to be attained by pupils at the end of each of above grades <i>Source: School Education Deptt. NATIONAL ACHIEVEMENT SURVEY (NCERT)</i>	Percentage	2015-16	N.A.	N.A.
			2017-18	<u>3rd Class</u> Lang : 88.50 Math : 85.10 <u>5th Class</u> Lang :83.10 Math : 81.40 <u>8th Class</u> Lang : 64.30 Maths :55.20	<u>3rd Class</u> Lang : 90.29 Math : 88.69 <u>5th Class</u> Lang :85.55 Math :79.81 <u>8th Class</u> Lang :82.82 Maths :60.93
5	4.1.5. Gross Intake Ratio to the last grade (primary, upper primary and secondary (in ratio per hundred) <i>Source: School Education Deptt. (Ministry of HRD) (U-DISE)</i>	Percentage	2015-16	99.87 Primary 99.32 Upper Primary 95.62 Secondary	99.60 Primary 99.64 Upper Primary 98.16 Secondary
6	4.1.6. Proportion of students enrolled in Grade 1 who reaches last grade of primary /upper primary /secondary levels (RETENTION RATE) <i>Source: School Education Deptt. (Ministry of HRD) (U-DISE)/ MoSPI, MIS</i>	Percentage	2015-16	75.77 Primary 70.68 Upper Primary 68.03 Secondary	84.21 Primary 70.70 Upper Primary 57.42 Secondary
			2018-19 <sup>(ScEduUT)</sup>	94.33 Upper Primary 83.89 Secondary	NA
7	4.1.7: Out of School Children Ratio (Primary, Upper Primary ) <i>Source: School Education Deptt /Surveyer Report (NATIONAL SURVEY ON ESTIMATION OF OUT OF SCHOOL CHILDREN- 2014)</i>	Ratio	2014	2.04 (6-13 Yrs)	2.97 (6-13 Yrs)
			2018-19 <sup>(ScEduUT)</sup>	0.79 Primary 1.20 Upper Primary	NA
8	4.1.7.a : Average Annual dropout rate at secondary level <i>Source: School Education Deptt. (Ministry of HRD) (U DISE) (UT Specific Indicator)</i>	Percentage	2014-15	6.79 Primary 5.44 Upper Primary 6.35 Elementary 17.28 Secondary	4.13 Primary 4.03 Upper Primary 4.10 Elementary 17.06 Secondary

**SDG GOAL -4- ENSURE INCLUSIVE AND EQUITABLE QUALITY EDUCATION AND PROMOTE LIFELONG LEARNING OPPORTUNITIES FOR ALL**

S. No	INDICATOR	VALUE OF INDICATOR			
		UNIT	YEAR	JK VALUE	ALL INDIA VALUE
<b>4.3:By 2030, ensure equal access for all women and men to affordable and quality technical, vocational and tertiary education, including university</b>					
9	4.3.2: Proportion of male-female enrolled in higher education <i>(Modified)Source: Higher Education Deptt. (AISHE Report - HRD)</i>	Ratio	2015-16	1.04	0.86
			2018-19	1.02	0.95
10	4.3.3: Gross Enrolment Ratio (GER) for Higher education <i>Source: Higher Education Deptt. (AISHE Report - HRD)</i>	Percentage	2015-16	24.80 Overall 23.47 Male & 26.22 Female	24.48 Overall
			2018-19	30.90 Overall 29.60 Male & 32.20 Female	28.30 Overall
<b>4.5 : By 2030, eliminate gender disparities in education and ensure equal access to all levels of education and vocational training for the vulnerable, including persons with disabilities, indigenous peoples and children in vulnerable situations</b>					
11	4.5.1. Enrolment ratio of children with disabilities <i>Source: School Education Deptt (Ministry of HRD) (U-DISE)</i>	Percentage	2015-16	1.39 Primary , 1.27 Upper Primary, 1.35 Elementary, 0.68 Secondary, 0.35 Higher Secondary	1.18 Primary , 1.13 Upper Primary, 1.16 Elementary, 0.56 Secondary, 0.25 Higher Secondary
12	4.5.2. Gender Parity indices for Primary/ Secondary/ Higher secondary <i>Source: School Education Deptt (Ministry of HRD)/ Higher Education (U-DISE)</i>	Percentage	2015-16	1.03 Primary 0.97 Secondary 0.92 Higher Secondary	1.03 Primary 1.02 Secondary 1.02 Higher Secondary
			2017-18	1.03 Primary 1.06 Secondary 0.96 Higher Secondary	1.02 Primary 1.10 Secondary 1.02 Higher Secondary
13	4.5.2.a: Gender Parity indices for Tertiary education <i>Source: Higher Education Deptt(AISHE Report - HRD) (UT Specific Indicator)</i>	Percentage	2015-16	1.12	0.92
			2018-19	1.09	1.00
<b>4.6: By 2030, ensure that all youth and substantial proportion of adults, both Men &amp; Women, achieve literacy &amp; numeracy</b>					
14	4.6.1: Literacy rate of Youth in the age group of 15-24 Years <i>Source: ORGI</i>	Percentage	2011	Overall: 83.15 Male: 89.56 Female: 76.25	Overall: 86.14 Male: 90.04 Female: 81.85

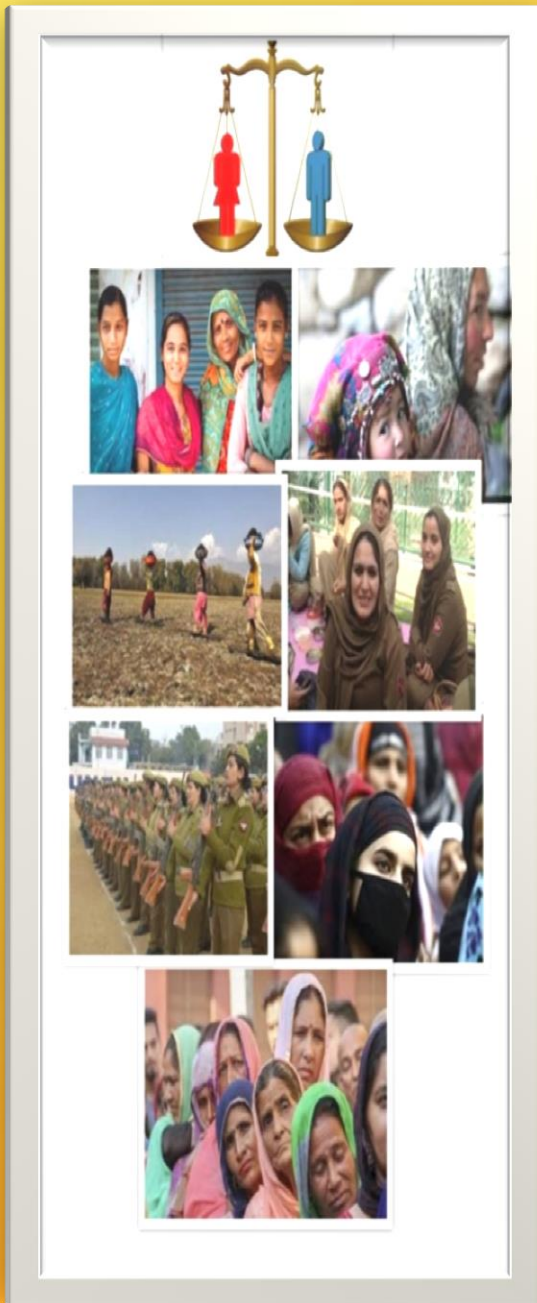
**SDG GOAL -4- ENSURE INCLUSIVE AND EQUITABLE QUALITY EDUCATION AND PROMOTE LIFELONG LEARNING OPPORTUNITIES FOR ALL**

S. No	INDICATOR	VALUE OF INDICATOR			
		UNIT	YEAR	JK VALUE	ALL INDIA VALUE
<b>4.a : Build and upgrade education facilities that are child, disability and gender sensitive and provide safe, non-violent, inclusive and effective learning environments for all</b>					
15	4.a.1. Proportion of schools with access to: (a) electricity; (b) computers for pedagogical purposes; (c) adapted infrastructure and materials for students with disabilities/disabled friendly ramp and toilets; d) basic drinking water;(e) single sex basic sanitation facilities. (f) basic hand washing <i>Source: School Education Deptt (Ministry of HRD) (U-DISE)</i>	Percentage	2015-16	Electricity: 30.97 Computer: 18.32 Disability Inf: 21.47 Drinking Water: 92.35 Boys Toilet: 92.14 Girls Toilet: 95.00 Basic Hand washing: 45.33	Electricity:62.81 Computer: 27.31 Disability Inf: 61.00 Boys Toilet: 97.02 Drinking Water: 96.81 Girls Toilet: 97.52 Basic Hand washing: 52.41
			2017-18	Electricity: 38.57 Computer: 20.06 Disability Inf:14.97 Drinking Water: 92.68 Boys Toilet: 94.32 Girls Toilet: 96.86 Basic Handwashing: 50.68	Electricity: 67.57 Computer: 29.57 Disability Inf: 33.07 Drinking Water: 95.83 Boys Toilet: 95.44 Girls Toilet: 97.84 Basic Handwashing: 59.34
<b>4.c : By 2030, substantially increase the supply of qualified teachers, including through international cooperation for teacher training in developing countries, especially least developed countries and small island developing States</b>					
16	4.c.1. Proportion of trained teachers, by education level (primary, upper primary, elementary, secondary and higher secondary education) <i>Source: School Education Deptt (Ministry of HRD) (U-DISE)</i>	Percentage	2015-16	39.16: Primary 68.70 Upper Primary 90.36 Secondary 77.08 Higher Secondary	75.49 Primary 78.18 Upper Primary 78.52 Secondary 64.45 Higher Secondary
			2017-18	42.91: Primary 56.00: Upper Primary 64.64: Secondary 73.57: Higher Secondary 58.01:Overall	77.85: Primary 78.57: Upper Primary 83.69: Secondary 87.24: Higher Secondary 81.32:Overall



## ACHIEVE GENDER EQUALITY AND EMPOWER ALL WOMEN AND GIRLS

# Gender Equality



Providing equal opportunities to women and girls is not only a basic human right, but is also crucial for sustainable future of societies. Providing women and girls with equal access to education, health care, decent work and representation in political and economic decision making processes will achieve sustainable economies and benefit societies and humanity at large. Any discrimination against women and girls in any form has to be ended.

Goal 5 aims to eliminate discrimination against women and girls everywhere. Empowering women and girls has a multiplier effect, and helps drive up economic growth and development across the board. Sexual violence and exploitation, the unequal division of unpaid care and domestic work, and discrimination in public office, all remain huge barriers that deny women equal access to labor markets. Affording women equal rights to economic resources such as land and property, and universal access to sexual and reproductive health are vital targets for realizing this goal.

This Goal has 9 targets to monitor gender equality and ensure empowerment of women and girls. A total of 29 indicators have been identified at national level to monitor the progress of these targets and data is available for 25 indicators.

Jammu & Kashmir has identified 21 indicators covering 6 targets to measure & monitor the progress of these targets.

The strategy to achieve this goal is to ensure participation of women in all walks of life including education, workforce, jobs, governance, etc to bring equality and to stop /eliminate discrimination of every type including physical & psychological.



**ACHIEVE GENDER EQUALITY AND EMPOWER ALL WOMEN AND GIRLS**



**Sex Ratio at Birth has increased from 906 in 2014-16 to 927 in 2016-18.**



**Rate of crime against women (per 1 lakh female population) has decreased from 13.30 % in 2015 to 12.60% in 2018.**



**33.56 percent seats are held by women in the local self govt. – PRI in 2019.**



**Female labour force participation rate was 30.20 during 2017-18 in J&K in comparison to 23.30 at National level.**



**No case of girl child trafficking was reported during 2018 in UT of J&K.**



**No Child marriage case was reported during 2018 in UT of J&K.**

## SDG GOAL -5- ACHIEVE GENDER EQUALITY AND EMPOWER ALL WOMEN AND GIRLS

S. No	INDICATOR	VALUE OF INDICATOR			
		UNIT	YEAR	JK VALUE	ALL INDIA VALUE
<b>5.1 : End all forms of discrimination against all women and girls everywhere</b>					
1	5.1.1. Rate of crimes against women per 1,00,000 female population <small>Source: Home (NCRB, Ministry of Home Affairs)</small>	Ratio	2015	57.00	53.90
			2018	54.03	58.79
2	5.1.2. Per lakh women (number of Women) that have been subjected to dowry offences during the year <small>Source: Home (NCRB, Ministry of Home Affairs)</small>	Number per Lakh women	2015	0.12	2.90
			2018	0.14	3.19
3	5.1.3. Sex Ratio at Birth <small>Source: Health &amp; Medical EduDeptt (SRS Report,ORGI)</small>	Ratio	2014-16	Overall : 906 Rural : 903 Urban : 919	Overall: 898 Rural : 902 Urban : 888
			2016-18	Overall:927 Rural : 930 Urban : 917	Overall:899 Rural : 900 Urban : 897
<b>5.2 : Eliminate all forms of violence against all women and girls in the public and private spheres, including trafficking and sexual and other types of exploitation</b>					
4	5.2.1. Proportion of crime against women to total crime reported in the country during the calendar year <small>Source: Home (NCRB, Ministry of Home Affairs)</small>	Percentage	2015	13.30	6.99
			2018	12.60	7.45
5	5.2.2. Per lakh women (Number of Women) who have experienced sexual crimes during the year <small>Source: Home (NCRB, Ministry of Home Affairs)</small>	Number per Lakh women	2015	31.70	28.00
			2018	31.90	27.70
6	5.2.3. Per lakh women (Number of Women) who have experienced Cruelty/ physical violence by husband or his relative during the calendar year <small>Source: Home (NCRB, Ministry of Home Affairs)</small>	Number per Lakh women	2015	6.78	18.76
			2018	5.11	16.05
7	5.2.4. Proportion of sexual crime against girl children to total crime against children during the calendar year <small>Source: Home (NCRB, Ministry of Home Affairs)</small>	Percentage	2015	9.62	34.80
			2018	23.86	49.94
8	5.2.5. Proportion of trafficking of girl children to total children trafficked during the calendar year <small>Source: Home (NCRB, Ministry of Home Affairs)</small>	Percentage	2015	100	90.29
			2018	0	44.00
9	5.2.6. Percentage of ever married women age 15-49 years who have ever experienced physical or sexual violence committed by their husband <small>Source: Health &amp; Medical Education Deptt (NFHS)</small>	Percentage	2015-16	9.30	30.90
<b>5.3 : Eliminate all harmful practices, such as child, early and forced marriage and female genital mutilation</b>					
10	5.3.1. Proportion of cases reported under the Prohibition of Child Marriage Act (early marriage of children below 18 years of age) to total crime against children <small>Source: Home (NCRB Ministry of Home Affairs)</small>	Percentage	2015	0	0.31
			2018	0	0.35
11	5.3.2. Percentage of Women aged 20-24 years who were married by exact age 18 years <small>Source: Health &amp; Medical Education Deptt (NFHS)</small>	Percentage	2015-16	8.70	26.80
<b>5.5 : Ensure women's full and effective participation and equal opportunities for leadership at all levels of decision-making in political, economic and public life</b>					
12	5.5.1. Proportion of seats held by women in National Parliament, State Legislation and Local Self Government <small>Source: CEC, India/J&amp;K, Raj SabhaSectt, Ministry of Panchayati Raj</small>	Percentage	2014	J&K State Legislative Assembly: 2.30 PRIs : 33.56	LokSabha:11.40 Rajya Sabha: 12.80 PRIs: 46.14
			2018-19	J&K State Legislative Assembly: NOT IN PLACE PRIs: 33.56	LokSabha:14.36 Rajya Sabha: 10.46 PRIs: 44.37

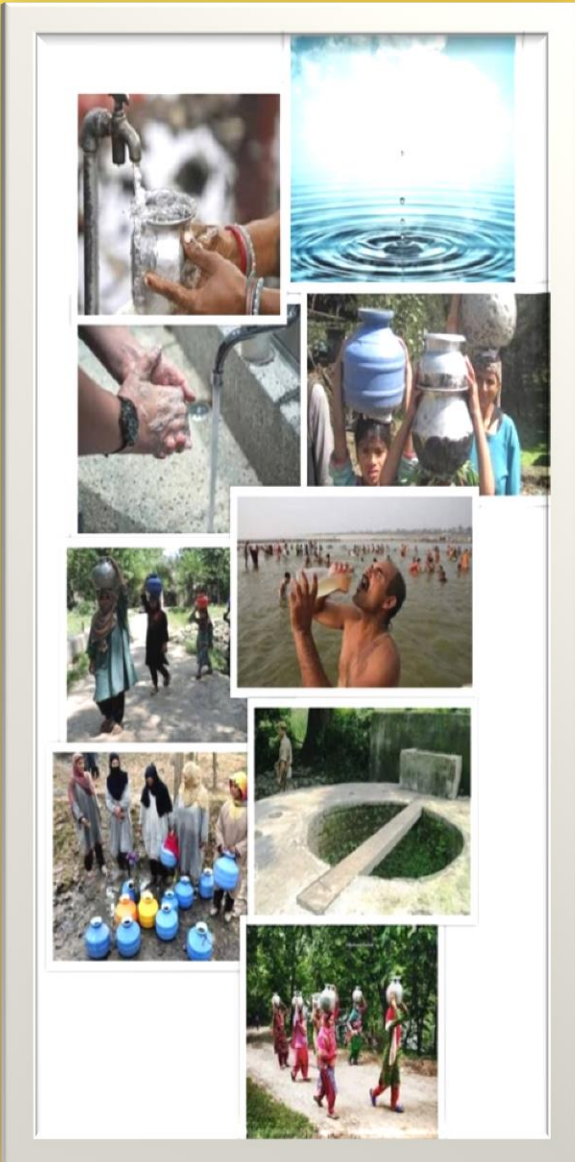
## SDG GOAL -5- ACHIEVE GENDER EQUALITY AND EMPOWER ALL WOMEN AND GIRLS

S No	INDICATOR	VALUE OF INDICATOR			
		UNIT	YEAR	JK VALUE	ALL INDIA VALUE
13	5.5.1.a: Female Labour Force Participation Rate (LFPR) Source: Labour & Employment Deptt (Periodic Labour Force Survey PLFS) <b>(UT Specific Indicator)</b>	Ratio	2015-16	NA	NA
			2017-18	Overall : 30.20 Rural : 32.30 Urban : 22.90	Overall: 23.30 Rural : 24.60 Urban : 20.40
14	5.5.1.b: Female to male ratio of average wage/ salary earnings during the preceding calendar month among the regular wage salaried employees (R+U) Source: Labour & Employment Deptt Periodic Labour Force Survey PLFS) <b>(UT Specific Indicator)</b> (*MoSPI, Employment & Unemployment Situation in IndiaNSS)	Ratio	2015-16	0.73 *	NA
			2017-18	0.91	0.79
15	5.5.2: Proportion of women in managerial positions including women in Board of Directors in listed companies Source: (Ministry of Corporate Affairs)	Per 1000 persons	2015-16	143	173
			2018-19	100	190
16	5.5.3. Number of women candidates out of total candidates contesting elections Source: Election commission of india	Percentage	2014	3.90 (3/ 77)	8.19 (668/ 8158)
			2019	3.80 (3/79)	9.01 (726/8054)
<b>5.6 : Ensure universal access to sexual and reproductive health and reproductive rights as agreed in accordance with the Programme of Action of the International Conference on Population and Development and the Beijing Platform for Action and the outcome documents of their review conferences</b>					
17	5.6.1. Percentage of currently married women (15-49 years) who use any modern Family planning methods Source: Health & Medical Education Deptt (NFHS)	Percentage	2015-16	Overall: 46.10 Rural : 42.10 Urban : 56.00	Overall: 47.80 Rural : 46.00 Urban : 51.20
18	5.6.2: Unmet need for Family planning for currently married women aged 15-49 years Source: Health & Medical Education Deptt (NFHS)	Percentage	2015-16	Overall: 12.30 Rural :13.70 Urban: 8.80	Overall: 12.90 Rural :13.20 Urban: 12.10
19	5.6.3: Percentage of population aged between 15-24 years with comprehensive knowledge of HIV/AIDS Source: Health & Medical Education Deptt (NFHS)	Percentage	2015-16	23.80 Male 20.00 Female	31.50 Male 21.70 Female
<b>5.a : Undertake reforms to give women equal rights to economic resources, as well as access to ownership and control over land and other forms of property, financial services, inheritance and natural resources, in accordance with national laws</b>					
20	5.a.1. Operational Land Holdings – (Female operated land holdings) Source: Agriculture Prod. Deptt. (Agriculture Census 2015-16)	Percentage	2015-16	7.60	13.96
21	5.a.3. Wage of casual labourers (gender-wise) Other than Public Works Source: Labour & Employment Deptt (Periodic Labour Force Survey PLFS)	Rs. Per day	Jan- March 2018	Overall: 373 Male : 375 Female: 282	Overall: 258 Male :280 Female: 177
			Jan- March 2019	Overall: 415 Male : 415 Female: 368	Overall: 279 Male :299 Female: 193
22	5.a.4. Average agricultural wage earnings from casual labour work other than public works Source: Labour & Employment Deptt (Periodic Labour Force survey PLFS)	Rs. Per day	Jan- March 2018	Overall: 333 Male : 366 Female: 200	Overall: 214 Male : 240 Female: 168
			Jan- March 2019	Overall: 397 Male : 397 Female: -	Overall: 227 Male : 250 Female: 185



## ENSURE AVAILABILITY AND SUSTAINABLE MANAGEMENT OF WATER AND SANITATION FOR ALL

### Clean Water And Sanitation



Clean water and sanitation are the essential for human healthy life. Clean water and sanitation protects people from disease and enables them to be economically more productive. Water scarcity, poor water quality and inadequate sanitation negatively impacts food security, livelihood choices and educational opportunities for poor families across the world. The SDG 6 ensures availability and sustainable management of water and sanitation for all and reflects the increased attention on water and sanitation in the global political arena. The Agenda recognizes that social development and economic prosperity depends on the sustainable management of fresh water resources and ecosystem.

The Goal has 8 targets under the goal to ensure the availability and sustainable management of water and Sanitation for all. A sum of 16 indicators has been identified at national level to measure & monitor the progress of these targets. The data for 10 indicators is available out of these 16 indicators. Jammu & Kashmir has identified 10 indicators covering 5 targets to measure & monitor the progress of these targets. In 2018-19, at national level the percentage of population having access to safe & adequate drinking water within their premises in Rural Areas was recorded at 40.50%, while in case of Jammu & Kashmir, it was recorded at 60.12%. 100% of the households had access to Individual toilet facility in rural areas of J&K in 2018-19.

The strategy to address this goal is to universalization of households with safe & adequate drinking water connection and sanitation in the UT.

**6** CLEAN WATER  
AND SANITATION



**ENSURE AVAILABILITY AND SUSTAINABLE MANAGEMENT OF WATER AND SANITATION FOR ALL**



Population getting safe and adequate drinking water within their premises in Rural Areas has increased from 56.09 % in 2015-16 to 60.22 in 2018-19 in UT of J&K.



UT of J&K has been declared as Open Defecation free.



Per capita storage of water was 2.062 Cu.m/person in 2018 which is very less as compared to all india figure of 196.93 Cu.m/person.



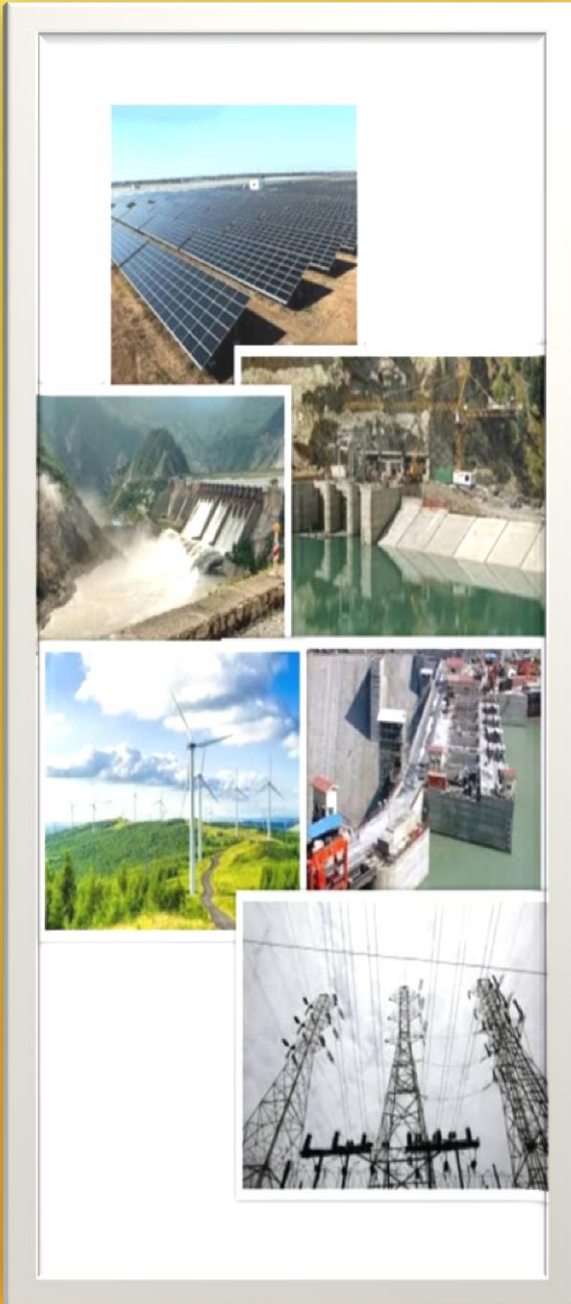
UT of J&K has no over-exploited blocks/mandals/talukas.

SDG GOAL -6- ENSURE AVAILABILITY AND SUSTAINABLE MANAGEMENT OF WATER AND SANITATION FOR ALL					
SNO	INDICATOR	VALUE OF INDICATOR			
		UNIT	YEAR	JK VALUE	ALL INDIA VALUE
<b>6.1 : By 2030, achieve universal and equitable access to safe and affordable drinking water for all</b>					
1	6.1.1. Percentage of Population (Households) getting safe and adequate drinking water within their premises through Pipe Water (PWS) (Rural) <i>Source: PHE, I&amp;FC JAL Shakti</i>	Percentage (RURAL)	2015-16 2018-19	56.09 60.22	35.76 40.58
2	6.1.2. Percentage of Population (Households) using an improved drinking water source (Rural) <i>Source: PHE, I&amp;FC JAL Shakti</i>	Percentage (RURAL)	2015-16 2018-19	99.92 99.74	94.57 95.98
<b>6.2 : By 2030, achieve access to adequate and equitable sanitation and hygiene for all and end open defecation, paying special attention to the needs of women and girls and those in vulnerable situations</b>					
3	6.2.1. Proportion of households having Individual Household Toilets (Urban, Rural) <i>Source: H&amp;UDD &amp; RDD (SBM Dashboard/NFHS)Ministry of /Jal Shakti/MoSPI (* Against actual demand ) ( # NFHS-4)</i>	Percentage	2015-16 Jan2020	Urban: 66.20# Rural: 32.84 Urban: 98.28 Rural: 100.00*	Urban: 70.30# Rural: 50.90 Urban: 100.00* Rural : 99.03*
4	6.2.2. Percentage of districts achieving Open Defecation Free (ODF) target <i>Source: H&amp;UDD &amp; RDD (SBM Dashboard) /Jal Shakti</i>	Percentage	2015-16 2018-19	0 100	0.72 88.13
5	6.2.3. Proportion of schools with separate toilet facility for girls <i>Source: Ministry of HRD (U-DISE )Deptt of School Education</i>	Percentage	2015-16 2017-18	95.00 96.86	97.52 97.84
<b>6.3 : By 2030, improve water quality by reducing pollution, eliminating dumping and minimizing release of hazardous chemicals and materials, halving the proportion of untreated wastewater and substantially increasing recycling and safe reuse globally</b>					
6	6.3.1. Percentage of sewage treated before discharge into surface water bodies <i>Source: H&amp;UDD / CPCB Bulletin , MOEF&amp;CC</i>	Percentage	2015	48.39	37.57
7	6.3.2. Percentage of industries (17 categories of highly polluting industries/ grossly polluting industry/ red category of industries) complying with waste water treatment as per CPCB norms <i>Source: Industries Department (CPCB)</i>	Percentage	2015-16 2017-18	N.A. Red : 98.06 17 Cat : 94.55 GPI : 95.65	NA Red : 87.63 17 Cat : 86.25 GPI : 88.99
<b>6.4 : By 2030, substantially increase water-use efficiency across all sectors and ensure sustainable withdrawals and supply of freshwater to address water scarcity and substantially reduce the number of people suffering from water scarcity</b>					
8	6.4.1. Percentage of ground water withdrawal against availability <i>Source: PHE,I&amp;FC MoWR, RD &amp; GR {Ground Water Year Report}/ MoJal Shakti</i>	Percentage	2013 2017	24.48 29.47	61.53 63.33
9	6.4.2. Per capita Storage of Water (Storage capacity of large Dams/Reservoirs/Projects) <i>Source: PHE,I&amp;FCMoWR, RD &amp; GR {Central Water Commission 2015, Ministry of Jalshakti}</i>	(m3/ person)	2015 2018	2.157 2.062	198.02 196.93
<b>6.6 : By 2020, protect and restore water-related ecosystems, including mountains, forests, wetlands, rivers, aquifers and lakes</b>					
10	6.6.1. Percentage of blocks/ mandals/ talukas over-exploited <i>Source: PHE, I&amp;FC/ Mo Jal Shakti</i>	Percentage	2013 2017	0 0	15.70 17.00



## ENSURE ACCESS TO AFFORDABLE, RELIABLE, SUSTAINABLE AND MODERN ENERGY FOR ALL

# Affordable And Clean Energy



Energy is critical and one of the basic parameters of growth. No growth can take place without availability of consistent and reliable form of energy. People with no sustainable access to energy are deprived of the opportunity to become part of national and global progress.

Energy is the main contributor to climate change as it produces around 60 per cent of green house gases. As the population will continue to grow, so the demand for cheap and efficient energy will also grow. More efficient energy standards could reduce domestic and industry electricity consumption by 14 per cent. The achievement of this goal has multiple positive outcomes on business opportunities, education, transport, health, and the future of our planet.

Energy from renewable resources – wind, water, solar, biomass and geothermal energy – is inexhaustible and clean. The State has to look forward to increase the share of renewable energy mainly from solar energy which is a big challenge. Per capita electricity consumption in the state has increased from 1032 KWh in 2015-16 to 1165 KWh in 2018-19. While this is a positive indicator from the angle of economic development, the state realizes the need to ensure that the increase in consumption is served by renewable sources.

The strategy to achieve this goal is to focus on promoting green/renewable sources of energy, mainly hydal& solar. The government is promoting harnessing of vast potential of green energy available and reducing carbon footprints.

Goal 7 aims to eliminate inefficient energy sources and instead promote universal access to safe cooking fuel, and electricity generated from non-polluting and renewable sources which are affordable. A sum of 5 indicators has been identified at national level to measure & monitor the progress of these targets and data for all the 5 indicators is available.

Jammu & Kashmir has identified 3 indicators covering 2 targets to measure & monitor the progress of these targets.



**ENSURE ACCESS TO AFFORDABLE, RELIABLE, SUSTAINABLE AND MODERN ENERGY FOR ALL**



**100 percent households are electrified in the UT.**



**100 percent of household are using clean cooking fuel in the UT.**



**Renewable energy share in the total installed electricity generation was 74.12 percent in the UT in 2018-19**

SDG GOAL -7- ENSURE ACCESS TO AFFORDABLE, RELIABLE, SUSTAINABLE AND MODERN ENERGY FOR ALL					
SNO.	INDICATOR	VALUE OF INDICATOR			
		UNIT	YEAR	JK VALUE	ALL INDIA VALUE
<b>7.1: By 2030, ensure universal access to affordable, reliable and modern energy services.</b>					
1	7.1.1: Percentage of households electrified. Source:Ministry of Power / PDD (Saubhagya Portal)	Percentage	Oct. 2017	Overall: 84.57 Rural : 80.67 Urban : 97.17	Overall: 88.34 Rural : 85.92 Urban : 97.88
			31 <sup>st</sup> March 2019	Overall:100.00 Rural : 100.00 Urban :100.00	Overall : 99.99 Rural: 99.99 Urban:100.00
2	7.1.2: Percentage of household using clean cooking fuel. Source: CAPD/NFHS 4 (*NFHS 4) , (#State CAPD)	Percentage	2015	Overall:57.60* Rural :41.60 Urban:91.20	Overall: 43.80* Rural :24.00 Urban :80.60
			2018-19	100.00 # (32.10 LAKH FAMILIES)	97.90
<b>7.2: By 2030, increase substantially the share of renewable energy in the global energy mix.</b>					
3	7.2.1: Renewable energy share in the total installed electricity generation Source: MNRE- Ministry of New & Renewable Energy (PDD/ Science & Technology Deptt)	Percentage	2015	77.25	29.07
			2018-19	74.12	34.55



## PROMOTE SUSTAINED, INCLUSIVE AND SUSTAINABLE ECONOMIC GROWTH, FULL AND PRODUCTIVE EMPLOYMENT AND DECENT WORK FOR ALL

### Decent Work and Economic Growth



Economic growth is a key driver of sustainable development. Labour productivity has increased globally, however, more progress is needed to increase employment opportunities, especially for young people, reduce inequality (particularly in terms of the gender pay gap), promote safe and secure informal employment and labour market working environments, and improve access to financial services to ensure sustained and inclusive economic growth.

SDG Goal 8 focuses on growth which is sustainable and inclusive in nature and seeks to address a host of concerns pertaining to productivity, full employment, unemployment, decent work and labour rights, formalization of sectors, sustainable tourism, and domestic financial institutions.

There are 12 targets under this goal to ensure decent work for all and economic growth of the societies. A total of 32 indicators have been identified at national level to measure & monitor the progress of the goal and the data is available for 27 indicators.

Jammu & Kashmir has identified 26 indicators covering 11 targets to measure & monitor the progress of these targets.

The strategy to address this goal is to increase economic growth through inculcating industrial culture for productive employment, reduce disguised/underemployment in agriculture through shift to cash crops and high yielding varieties and increase tourism activities for increase in tourist footfall besides utilization of natural resources to the optimum.

**8** DECENT WORK AND  
ECONOMIC GROWTH



**PROMOTE SUSTAINED, INCLUSIVE AND SUSTAINABLE ECONOMIC GROWTH, FULL AND PRODUCTIVE EMPLOYMENT AND DECENT WORK FOR ALL**



Annual growth rate of per capita GDP of UT at constant prices was 4.50 percent in 2018-19 in comparison to 5.10 at National Level.



Annual growth in agriculture sector at constant prices was 2.14 percent and manufacturing was 5.26 percent in 2018-19 in comparison to 2.40 percent and 6.0 percent at national level respectively.



Annual growth in tourism sector at constant prices was 5.69 percent in 2018-19.



Unemployment rate has decreased from 5.3 in 2017-18 to 5.1 in 2018-19 in J&K in comparison to 6.10 in 2017-18 to 5.8 in 2018-19 at national level.



Number of banking outlets per 1 lakh population in J&K has increased from 60 in 2015-16 to 176 in 2018-19.



54 percent households received social protection benefits under MGNREGA in which 3.69 crore man-day's were provided during 2018-19.



The wages earned in regular/casual employment by Male & Female workers were Rs.23,620 and Rs.16,956 per month respectively in UT of J&K as compared to Rs.16,842 and Rs. 12,285 per month respectively at All India level in 2018-19.

SDG GOAL -8- PROMOTE SUSTAINED, INCLUSIVE AND SUSTAINABLE ECONOMIC GROWTH, FULL AND PRODUCTIVE EMPLOYMENT AND DECENT WORK FOR ALL					
S. No	INDICATOR	VALUE OF INDICATOR			
		UNIT	YEAR	JK VALUE	ALL INDIA VALUE
<b>8.1: Sustain per capita economic growth in accordance with national circumstances and, in particular, at least 7 per cent gross domestic product growth per annum in the least developed countries.</b>					
1	8.1.1 Annual growth rate of GSDP (adjusted to price changes) per capita <i>Source: DES (2014-15 being abnormal Year, Compounded Growth over 2013-14 has been taken)</i>	Percentage	2015-16	5.15 at Constant Prices	6.65 at Constant Prices
			2018-19	9.04 at Current Prices	9.08 at Current Prices
			2015-16	4.50 at Constant Prices	5.08 at Constant Prices
			2018-19	10.34 at Current Prices	9.87 at Current Prices
2	8.1.1.a: Annual growth rate of NSDP (adjusted to price changes) per capita <i>Source: DES (2014-15 being abnormal Year, Compounded Growth over 2013-14 has been taken)</i>	Percentage	2015-16	5.30 at Constant Prices	6.67 at Constant Prices
			2018-19	9.46 at Current Prices	9.37 at Current Prices
			2015-16	3.48 at Constant Prices	4.83 at Constant Prices
			2018-19	9.73 at Current Prices	9.72 at Current Prices
<b>8.2: Achieve higher levels of economic productivity through diversification, technological upgrading and innovation, including through a focus on high -value added and labour-intensive sectors.</b>					
3	8.2.3: Annual growth in manufacturing sector at Constant Prices <i>Source: DES/ MoSPI(2014-15 being abnormal Year, Compounded Growth over 2013-14 has been taken for J&amp;K)</i>	Percentage	2015-16	9.22	8.00
			2018-19	5.26	6.00
4	8.2.4: Annual growth in Agriculture Sector at Constant Prices <i>Source: DES/ MoSPI(2014-15 being abnormal Year, Compounded Growth over 2013-14 has been taken for J&amp;K)</i>	Percentage	2015-16	5.75	0.65
			2018-19	2.14	2.41
5	8.2.4.a : Annual growth in Tourism Sector at Constant Prices <i>(UT Specific Indicator)Source: DES/MoSPI(2014-15 being abnormal Year, Compounded Growth over 2013-14 has been taken for J&amp;K) (The estimates for tourism, sector has been indirectly worked out from sectors of hotels and restaurants , Trade, transport ( Raod -Air-Rail)and Industries)</i>	Rate	2015-16	6.29	Minus 3.0
			2018-19	5.69	11.60 (2017-18)
<b>8.3 Promote development-oriented policies that support productive activities, decent job creation, entrepreneurship, creativity and innovation, and encourage the formalization and growth of micro, small- and medium-sized enterprises, including through access to financial services.</b>					
6	8.3.1: Percentage of workers in informal sector among total workers engaged in non agriculture sector <i>Source: Labour and Employment , PLFS/MoSPI</i>	Percentage	2017-18	67.10	68.20
			2018-19	71.80	68.40
7	8.3.4: Number of MSME units registered under the online UdyogAadhar registration <i>Source: Ins&amp; Commerce Department (MSME,UdyogAadharPortal)</i>	Number	2016-17	2,539	23.73 Lakh
			2018-19	2,416	21.23 Lakh
8	8.3.5: Number of start-ups recognized under start-up India. <i>Source: Commerce and Industry Deptt /DIPT</i>	Number	2015-16	N.A.	503
			2017-18	63	8,724
9	8.3.9: Outstanding Credit to Micro, Small and Medium Enterprises (MSME) <i>Source: Industries/ Finance (SLBC) (Ministry of MSME)</i>	Rs. In Crore	2015-16	9,207.83	12.16 Lakhs
			2018-19	13,871.92	15.11 Lakhs

**SDG GOAL -8- PROMOTE SUSTAINED, INCLUSIVE AND SUSTAINABLE ECONOMIC GROWTH, FULL AND PRODUCTIVE EMPLOYMENT AND DECENT WORK FOR ALL**

SNO	INDICATOR	VALUE OF INDICATOR			
		UNIT	YEAR	JK VALUE	ALL INDIA VALUE
<b>8.4: Improve progressively, through 2030, global resource efficiency in consumption and production and Endeavour to decouple economic growth from environmental degradation, in accordance with the 10-Year Framework of Programmers on Sustainable Consumption and Production, with developed countries taking the lead.</b>					
10	8.4.2: Per capita consumption of Petroleum Products <i>(Modified Indicator)</i> <i>Source: CAPD/ (Indian Petroleum &amp; Natural Gas Statistics)</i>	KG Per Capita	2015-16	106.90	136.90
			2018-19	119.70	157.30
11	8.4.3: Proportion of Hazardous waste recycled (treated) vs. Hazardous waste generated. <i>(Modified Indicator)</i> <i>Source: H&amp;UDD (CPCB, MOEF &amp; Change)</i>	Percentage	2015-16	N.A.	N.A.
			2017-18	81.00 (3642/ 4496 MT)	33.00 (3132882/ 9441876 MT)
<b>8.5: By 2030, achieve full and productive employment and decent work for all women and men, including for young people and persons with disabilities and equal pay for work of equal value.</b>					
12	8.5.1 :Unemployment Rate (ALL) (in rate per 100) <i>Source: Labour &amp; Employment Deptt (PLFS)/MoSPI</i>	Percentage	2017-18	Overall: 5.30 Rural: 4.20 Urban: 10.00	Overall: 6.10 Rural: 5.30 Urban: 7.80
			2018-19	Overall: 5.10 Rural: NA Urban: NA	Overall: 5.80 Rural: NA Urban: NA
13	8.5.2: Workforce Participation Ratio ( WPR) (All) ( PS+SS) (in rate per 100) <i>Source: MOSPI- PLFS/ MoSPI</i>	Percentage	2017-18	Overall:38.60 Rural: 39.90 Urban: 34.00	Overall:34.70 Rural: 35.00 Urban: 33.90
			2018-19	Overall:40.70 Rural: 42.70 Urban: 33.20	Overall:35.30 Rural: 35.80 Urban: 34.10
14	8.5.3: Wage earned by male-female in regular wage/ salaried employment (in rate per 100) <i>Source: MOSPI- PLFS/ MoSPI</i>	Per month in Rupees	2017-18 (Jan- March)	Overall: 20,520 Male : 20,851 Female : 19,005	Overall : 16,850 Male : 17,663 Female : 13,976
			2018-19 (Jan- March)	Overall : 22,710 Male : 23,620 Female : 16,956	Overall : 15,827 Male : 16,842 Female : 12,285
15	8.5.6: Share of unemployed persons in population aged 15-24 (in rate per 100) <i>Source: MOSPI- PLFS/ MoSPI</i>	Percentage	2017-18	Total : 5.00	Total : 7.00
			2018-19	Total : 4.10	Total : 6.70
<b>8.6 : By 2020, substantially reduce the proportion of youth not in employment, education or training.</b>					
16	8.6.1: Unemployment Rate (15 - 24 years) (in rate per 100) <i>Source: MOSPI- PLFS/ MoSPI</i>	Percentage	2017-18	17.00	24.20
			2018-19	13.10	23.10
<b>8.7 : Take immediate and effective measures to eradicate forced labour, end modern slavery and human trafficking and secure the prohibition and elimination of the worst forms of child labour, including recruitment and use of child soldiers, and by 2025, end child labour in all its form.</b>					
17	8.7.1: Human trafficking cases per 10 lakh population. <i>Source: Home Deptt (NCRB)</i>	Number per Ten lakh population	2015	0.16	5.46
			2018	0.07	1.86
18	8.7.2: Number of missing children. <i>Source: Home Deptt (NCRB)</i>	Number	2015	Overall:414 Boys: 198 Girls: 216	Overall:60443 Boys: 23848 Girls: 36595
			2018	Overall:294 Boys: 94 Female: 200	Overall:67134 Boys: NA Girls: NA

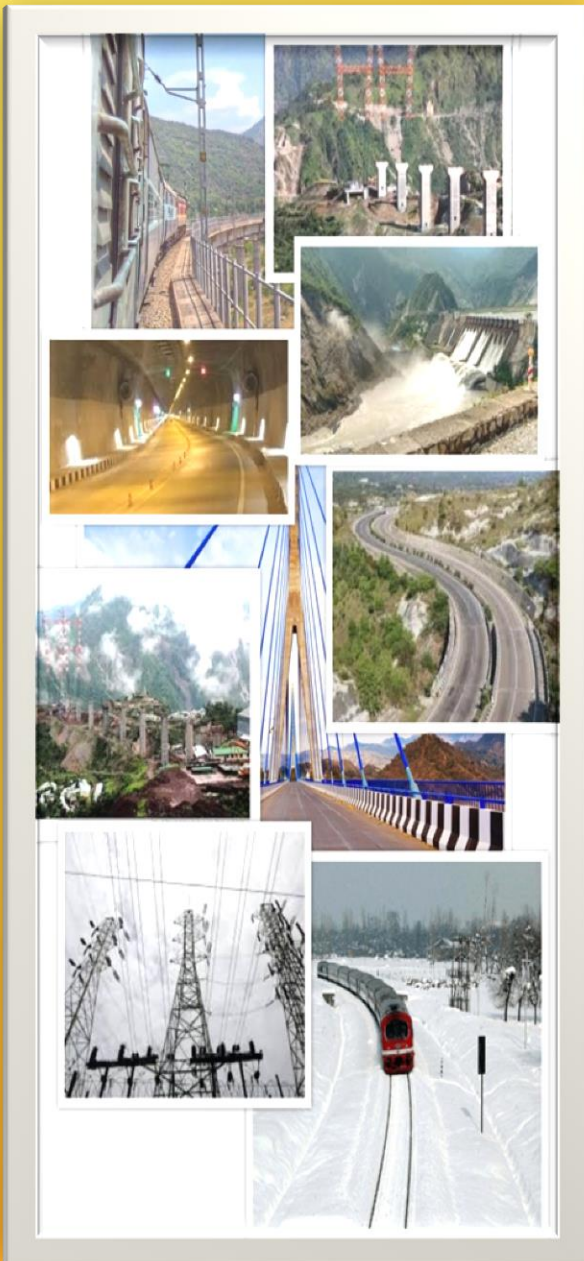
**SDG GOAL -8- PROMOTE SUSTAINED, INCLUSIVE AND SUSTAINABLE ECONOMIC GROWTH, FULL AND PRODUCTIVE EMPLOYMENT AND DECENT WORK FOR ALL**

SNO	INDICATOR	VALUE OF INDICATOR			
		UNIT	YEAR	JK VALUE	ALL INDIA VALUE
<b>8.8: Protect labour rights and promote safe and secure working environment for all workers, including migrant workers, in particular women migrants, and those in precarious employment.</b>					
19	8.8.3: Number of Accidents in Factories <i>Source: Industries &amp; Commerce Department (Accidents &amp; Suicides in India)</i>	Number	2015	N.A.	21,364
			2016	3	6,556 5,476 (2018)
20	8.8.4: Percentage of Households receiving social protection benefits under Mahatma Gandhi National Rural Employment Guarantee Act (MGNREGA) (Employment provided to job cards issued) <i>Source: Rural Development (MGNAREGA PORTAL)/ MoRural dev.</i>	Percentage	2015-16	50.25	41.38
			2018-19	53.89	44.07
<b>8.9: By 2030, devise and implement policies to promote sustainable tourism that creates jobs and promotes local culture and products.</b>					
21	8.9.1: Percentage change in number of tourists (domestic and foreign) over previous year <i>Source: Tourism Department (Ministry of Tourism)</i>	Percentage	2016	3.00	12.70
			2018	20.30	12.10
22	8.9.2: Direct contribution of Tourism to total GDP / GSDP and in growth rate <i>Source: DES/ MoSPI (The estimates for tourism, sector has been indirectly worked out from sectors of hotels and restaurants, Trade, transport (Road -Air-Rail) and Industries)</i>	Percentage	2015-16	Direct contribution of Tourism to GSDP: 3.58 % Growth Rate: 6.29 %	Direct contribution of Tourism to GDP: 5.09 %  Growth Rate: Minus 3.0 %
			2018-19	Direct contribution of Tourism to GSDP: 3.73 % Growth Rate: 5.69 %	Direct contribution of Tourism to GDP: 5.07 % Growth Rate: 11.60 % (2017-18)
<b>8.10: Strengthen the capacity of domestic financial institutions to encourage and expand access to banking, insurance and financial services for all.</b>					
23	8.10.2: Number of accounts (including Deposit & Credit accounts) of Scheduled Commercial Banks per 1,000 population <i>Source: Finance Deptt (RBI)/RBI</i>	Number/ 1000 population	2015-16	1,416.84	1,413.31
			2018-19	1,002.80	1,490.66
24	8.10.3: Number of banking outlets per 1,00,000 population. <i>Source: Finance Deptt/ (RBI)</i>	Number/ 100000	2015-16	60	49.50
			2018-19	176	145.60
25	8.10.4: Automated Teller Machines (ATM's) per 1,00,000 population. <i>Source: Finance Deptt/ (RBI)</i>	Number/ 100000	2015-16	18.0	16.6
			2018-19	19.5	16.8
<b>8.b: By 2020, develop and operationalize a global strategy for youth employment and implement the Global Jobs Pact of the International Labour Organization.</b>					
26	8.b.1: Number of man days created under Mahatma Gandhi National Rural Employment Guarantee Act (MGNREGA). <i>Source: Rural DevDeptt MNREGA PORTAL</i>	Number (Mandays in Crores)	2015-16	3.07	234.97
			2018-19	3.69	267.99



## BUILD RESILIENT INFRASTRUCTURE, PROMOTE INCLUSIVE AND SUSTAINABLE INDUSTRIALIZATION AND FOSTER INNOVATION

# Industry Innovation and Infrastructure



Investment in transport, irrigation, energy and information & communications technology have been crucial to driving economic growth and empowering communities. Strong physical network of industry and communication can enhance productivity and incomes, and improve health, wellbeing and education. Technological progress similarly enhances wellbeing.

SDG 9 focuses on Promoting inclusive and sustainable industrialization and building resilient infrastructure while stressing the importance of an ecosystem which can foster innovation. These drivers can create jobs and put in place facilities which can spur more efficient functioning of business and society. Government and corporate sector will have to contribute to create a hospitable policy environment for innovation, encourage scientific research, and improve access to information technology universally.

This Goal has 8 targets to measure its progress. A total of 16 indicators have been identified at national level to measure & monitor the progress of these targets. The data is available for 15 indicators.

Jammu & Kashmir has identified 5 indicators covering 3 targets to measure & monitor the progress of these targets.

The strategy to address this goal is to build connectivity, ensure availability of energy and credit facilities to build basic infrastructure for production and creation of employment.



**BUILD RESILIENT INFRASTRUCTURE, PROMOTE INCLUSIVE AND SUSTAINABLE INDUSTRIALISATION AND FOSTER INNOVATION**



Habitations covered by all weather/season roads have increased from 75.48 per cent in 2015-16 to 84.50 percent in 2018-19 in J&K.



Number of internet subscriptions as percentage of total population has increased from 24.30 percent in 2015-16 to 40.40 per cent in 2018-19.



Number of Broadband Subscribers per 10,000 population has increased from 957.36 in 2015-16 to 3623.98 in 2018-19.



Manufacturing employment as a proportion of total employment was 9.10 in 2018-19 as compared to national average of 12.07.

## SDG GOAL -9- BUILD RESILIENT INFRASTRUCTURE, PROMOTE INCLUSIVE AND SUSTAINABLE INDUSTRIALISATION AND FOSTER INNOVATION

SNO	INDICATOR	VALUE OF INDICATOR			
		UNIT	YEAR	JK VALUE	ALL INDIA VALUE
<b>9.1: Develop quality, reliable sustainable and resilient infrastructure including regional and trans-border infrastructure, to support economic development and human well-being, with a focus on affordable and equitable access for all.</b>					
1	9.1.1: Percentage of habitations covered by all weather/season road. (Modified) Source: PWD	Percentage	2015-16	75.48	NA
			2018-19	84.50	NA
<b>9.2: Promote inclusive and sustainable industrialization and, by 2030, significantly raise industry's share of employment and gross domestic product, in line with national circumstances, and double its share in least developed countries.</b>					
2	9.2.2: Manufacturing employment as a proportion of total employment. Source: Labour & Employment PLFS/ NSSO/MoSPI	Percentage	2017-18	7.40	12.10
			2018-19 (PLFS)	9.10	12.07
<b>9. c: Significantly increase access to information and communications technology and strive to provide universal and affordable access to the internet (in least developed countries by 2020.)</b>					
3	9.c.1: Number of Internet Subscriptions as percentage of Total population Source: IT Dept DoT/TRAI	Percentage	2015-16	24.30	26.98
			2018-19	40.40	48.48
4	9.c.2: Number of Broadband Subscribers per 10000 Population. Source: IT Dept DoT/TRAI	Subscribers/10000 pop	2015-16	957.36	1,178.81
			2018-19	3,623.98	4,288.92
5	9.c.2.a: Percentage of Gram Panchayat covered under Bharat Net Source: IT Dept DoT/TRAI <b>(UT Specific Indicator)</b>	Percentage	2015-16	0	NA
			2018-19	0	NA



## REDUCE INEQUALITY WITHIN AND AMONG COUNTRIES

# Reduced Inequalities



Inequality has been recognized as a serious threat to the progress of humankind in the 21st century. Higher relative poverty, which is one of the grave consequences of inequality, can impede the journey towards a happy and developed society. SC and ST communities are the historically disadvantaged social groups. Furthermore, people living under Below Poverty Line are also at disadvantageous position. Up-liftment of these sections of society will drastically bring down inequality.

The government allocates resources for SC and ST communities under special component with schemes for scholarships, basic infrastructure in SC/ST habitations, financial incentives to SC/ST entrepreneurs, Skill development programmes for ST youth, among other things. Various interventions are already in place exclusively for BPL Population and women empowerment (Housing for all, UJWALA, HIS, Free education to Girl Child, State Marriage assistance, Widow pension, Free Food/subsidized Food, etc.).

Goal 10 seeks to lessen inequalities among various socio-economic groups in terms of access to services, economic opportunities and overall quality of life.

A total of 9 indicators have been identified at national level to measure & monitor the progress of these targets and all the 9 Indicators have data. Jammu & Kashmir has identified 7 indicators covering 3 targets to measure & monitor the progress of these targets.

The strategy to address this goal is to create social coverage nets for providing special assistance to the disadvantaged groups for improving their life standards and participation in the economic activities.

10 REDUCED INEQUALITIES



REDUCED INEQUALITIES WITHIN AND AMONG COUNTRIES



42,205 Pre-Matric Scholarships and 13,485 Post-Matric Scholarships were provided to disadvantaged sections in the year 2019-20 in J&K.



About 6 lakh poor households were provided Health Insurance Coverage under PMAY.



1,50,668 beneficiaries were provided financial assistance under National Widow Pension Scheme/ Old Age Pension/ Disability Pension in J&K during 2019-20.



33.56 percent seats have been reserved for Women in PRIs.



32.57 percent of the funds were utilized under Tribal Sub Plan in J&K during 2018-19.



58.00 percent of the funds were utilized under BADP Funds in J&K during 2018-19.



57,011 beneficiaries benefitted under Pradhan Mantri Matritva Vandana Yojana (PMMVY) in J&K during 2019-20



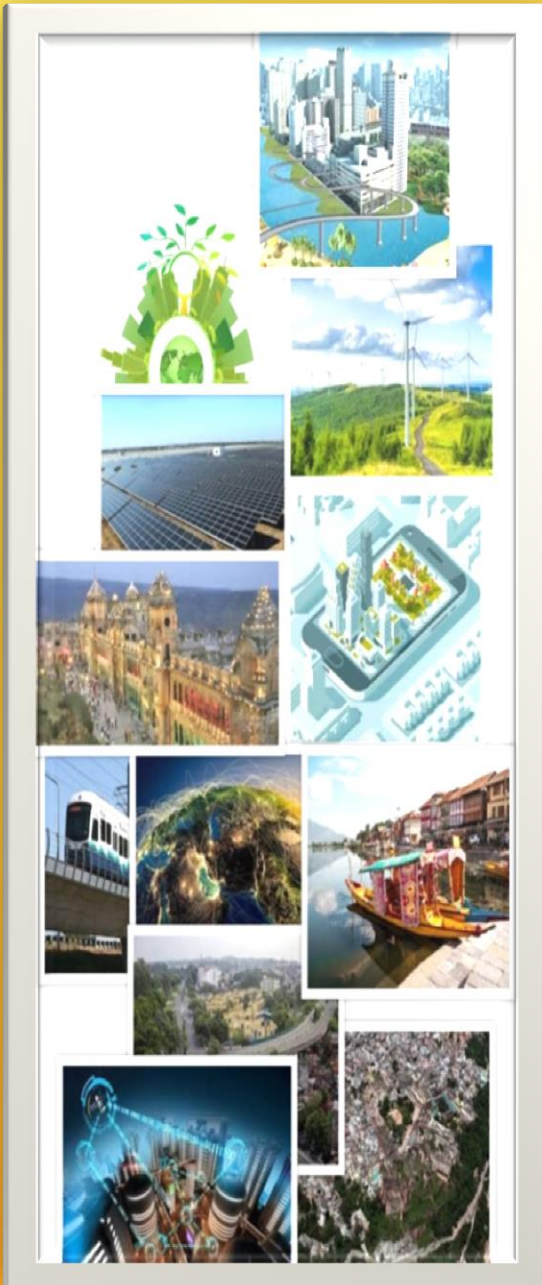
Percentage of government spending of J&K in Social Sector to total spending was 4.39 percent in 2018-19.

SDG GOAL -10- REDUCED INEQUALITIES WITHIN AND AMONG COUNTRIES					
SNO	INDICATOR	VALUE OF INDICATOR			
		UNIT	YEAR	JK VALUE	ALL INDIA VALUE
<b>10.1 : By 2030, progressively achieve and sustain income growth of the bottom 40 per cent of the population at a rate higher than the national average</b>					
1	10.1.1 : Growth rates of household expenditure per capita among the bottom 40 per cent of the population and the total population (Rural, Urban) <i>Source: (NSO-MOSPI)</i>	Percentage	2011-12	7.27 R 11.82 U	13.61 R 13.35 U
2	10.1.2: Gini Coefficient of Household Expenditure (Rural, Urban) <i>Source: (NSO-MOSPI)</i>	Co-efficient(Ratio)	2011-12	0.235 R 0.301 U	0.283 R 0.363 U
<b>10.2 : By 2030, empower and promote the social, economic and political inclusion of all, irrespective of age, sex, disability, race, ethnicity, origin, religion or economic or other status</b>					
3	10.2.1 Percentage of population living below 50 percentage of median per capita household expenditure <i>Source: (NSO-MOSPI)</i>	Percentage	2011-12	3.51 R 7.21 U	4.28 R 10.89 U
4	10.2.2: Proportion of seats held by women in National Parliament, State Legislation and Local Self Government <i>Source: Chief Election Office, India/ J&amp;K , Rajyasabha Secretariat, Ministry of Panchayati Raj</i>	Percentage	2014	J&K State Legislative Assembly: 2.30 PRIs : 33.56	Lok Sabha:11.40 Rajya Sabha: 12.80 PRIs: 46.14
			2018-19	J&K State Legislative Assembly: NOT IN PLACE PRIs: 33.56	Lok Sabha:14.36 Rajya Sabha: 10.46 PRIs: 44.37
5	10.2.3: Proportion of SC/ST persons in Elected Bodies in Lok Sabha <i>Source: Chief Election Office, India/ J&amp;K</i>	Percentage	2014	Lok Sabha SC/ST :0	Lok Sabha SC:15.50 Lok Sabha ST: 8.70
			2019	Lok Sabha SC/ST: 0	Lok Sabha SC:15.50 Lok Sabha ST: 8.67
<b>10.4 : Adopt policies, especially fiscal, wage and social protection policies, and progressively achieve greater equality</b>					
6	10.4.1.a: Percentage of funds utilized under Border Area Development Programme <i>Source: PD&amp;MD (UT Specific Indicator)</i>	Percentage	2015-16	87.00	N.A.
			2018-19	58.00	N.A.
7	10.4.1.b: Percentage of Tribal Sub Plan Funds Utilized <i>Source: Tribal Affairs Deptt(UT Specific Indicator)</i>	Percentage	2015-16	55.58	N.A.
			2018-19	32.57	N.A.



## MAKE CITIES AND HUMAN SETTLEMENTS INCLUSIVE, SAFE, RESILIENT AND SUSTAINABLE

# Sustainable Cities and Communities



Rapid urbanization is exerting pressure on fresh water supplies, sewage, the living environment and public health. Rapid urbanization has led to congestion, lack of basic services, shortage of adequate housing, and declining infrastructure. Sustainable and resilient cities have become the backbone in the economic development of any state.

SDG 11 has 10 targets to make cities and human settlements inclusive, safe, resilient and sustainable. A total of 15 indicators have been identified at national level to measure & monitor the progress of these targets and data is available for 8 indicators.

Jammu & Kashmir has identified 8 indicators covering 5 targets to measure & monitor the progress of these indicators.

The strategy to address this goal is to plan cities as per the standard specifications of urban requirement thereby reducing ill effects of urbanization.

## 11 SUSTAINABLE CITIES AND COMMUNITIES



### MAKE CITIES AND HUMAN SETTLEMENTS INCLUSIVE, SAFE, RESILIENT AND SUSTAINABLE



74.83 percent wards are covered with 100% Door to Door Waste Collection in J&K during 2019-20



Percentage of waste processing has increased from 1.00 percent in 2015 to 16.00 percent in 2018 in J&K.



12.22 percent houses, of Net Demand Assessment, has been completed under Pradhan Mantri Awas Yojna (PMAY) for economically weaker section population in urban areas during 2019-20 in J&K.



People killed in road accidents (per 1 lakh population) has decreased from 7.48 to 7.34 and people injured from 66.84 to 58.50 from 2015 to 2018 respectively in J&K.



The Restoration and Reuse of Historic Buildings have increased from 9 in 2015 to 12 in 2018 in J&K.



Annual Mean Level of fine Particulate matter (PM 10) of UT was 52 Minimum, 220 Maximum and 149 Average during 2017 in J&K.

## SDG GOAL -11- MAKE CITIES AND HUMAN SETTLEMENTS INCLUSIVE, SAFE, RESILIENT AND SUSTAINABLE

SNO	INDICATOR	VALUE OF INDICATOR			
		UNIT	YEAR	JK VALUE	ALL INDIA VALUE
<b>11.1 : By 2030, ensure access for all to adequate, safe and affordable housing and basic services and upgrade slums</b>					
1	11.1.1 : Percentage of Urban Population living in Slums, informal settlements or inadequate housing Source: Housing & Urban Development Department/ MoSPI	Percentage	2011 (Census)	19.28	17.42
2	11.1.3.a : Houses completed under Pradhan Mantra Awas Yojna (PMAY) as a percentage of Net Demand Assessment for Houses Source: Housing & Urban Development Department (PMAY Progress Report) (UT Specific Indicator) (*department value)	Percentage	2017-18 (URBAN)	1.26*	NA
			2020 (20th April 2020)(URBAN)	12.22	31.87
<b>11.2: By 2030, provide access to safe, affordable, accessible and sustainable transport system for all, improve road safety, notably by expanding public transport, with special attention to the needs of those in vulnerable situations, women, children, persons with disabilities and older persons</b>					
3	11.2.2: People killed/ injured in road accidents (per 1 lakh population) Source: Transport/Home (NCRB)	Persons per lakh Population	2015	7.48 Deaths 66.84 Injured	11.81 Deaths 38.31 Injured
			2018	7.34 Deaths 58.50 Injured	11.54 Deaths 33.74 Injured
<b>11.4 : Strengthen efforts to protect and safeguard the world's cultural and natural heritage</b>					
4	11.4.1 : Restoration and Reuse of Historic Buildings Source: Department of Culture/MoH&UDD	Number	2015	9	NA
			2018	12	NA
<b>11.5: By 2030, significantly reduce the number of deaths and the number of people affected and substantially decrease the direct economic losses relative to global gross domestic product caused by disasters, including water-related disasters, with a focus on protecting the poor and people in vulnerable situations</b>					
5	11.5.1 : Number of deaths, attributed to extreme climate per 100,000 population Source: Revenue/ Disaster Management (Annual Report, Ministry of Home Affairs)	Number per lakh population	2015-16	0.16	0.11
			2017-18	0.05	0.16
<b>11.6 : By 2030, reduce the adverse per capita environmental impact of cities, including by paying special attention to air quality and municipal and other waste management</b>					
6	11.6.2 : Annual Mean Level of fine particulate matter (e.g. PM2.5 and PM 10) in cities (population weighted) Source: Central Pollution Control Board ENVISTAT 2018)/MoEF&CC	$\mu g /m^3$	2016	(PM 10) 83 Minimum 181 Maximum 131 Average	NA
			2017	(PM 10) 52 Minimum 220 Maximum 149 Average	NA
7	11.6.4 : Percentage of Wards with 100% Door to Door Waste Collection Source: H&UDD (Swachh Bharat Mission Urban Dashboard)/MoH&UD	Percentage	2015	35.45	40.91
			As on Jan 2020	74.83 (809/1081)	96.05 (81135/ 84475)
8	11.6.5: Percentage of Waste Processed Source: H&UDD (Swachh Bharat Mission Urban Dashboard) (CPCB BULLETIN/ SBM DASH BOARD) (* SBM Portal)	Percentage	2015-16	0.22	17.97
			As on Jan 2020	16.24*	60.00

## ENSURE SUSTAINABLE CONSUMPTION AND PRODUCTION PATTERNS

# Responsible Consumption and Production



Sustainable Consumption and Production is about the use of services and related products, which respond to basic needs and bring a better quality of life while minimizing the use of natural resources and toxic materials as well as the emissions of waste and pollutants. Achieving economic growth and sustainable development requires an urgent reduction of humanity's ecological footprint by changing the way goods and resources are produced and consumed.

Goal 12 of the Sustainable Development Goals ensures Sustainable Consumption and Production Patterns.

In Jammu & Kashmir, farmers are shifting towards more cash crops like Horticulture, Floriculture, Vegetable Production etc. The State produces some world renowned agriculture produces like Saffron, Basmati, Mushkbudgi, Rajmash, Cocoon production, Honey flowers, besides dry & fresh fruits and Medicinal & Aromatic plants. The Government is also laying effort to increase the area under irrigation.

There are 11 targets in Goal 12 to measure the sustainable consumption & production patterns. A total of 15 indicators have been identified at national level to measure & monitor the progress of these targets and data is available for only 5 indicators.

Jammu & Kashmir has identified 9 indicators covering 3 targets to measure & monitor the progress of these targets.

The strategy to address this goal is to increase high yielding cash crops for ensuring sustainability on agriculture and horticulture sectors. Regarding sustainable consumption, markets shall be developed to increase access, consumption of produce and reduction of losses.

**ENSURE SUSTAINABLE CONSUMPTION & PRODUCTION PATTERNS**



Per Capita food grains availability was 170 KGs per year in the UT as compared to 180.10 Kg at national level during 2018-19.



Post harvest and storage losses in J&K were 0.03 percent in Storage & 0.20 percent in distribution during 2018-19.



16.66 percent horticulture produce was processed in J&K during 2018-19.



Cold store storage capacity has increased by 13.45 percent in 2018-19.

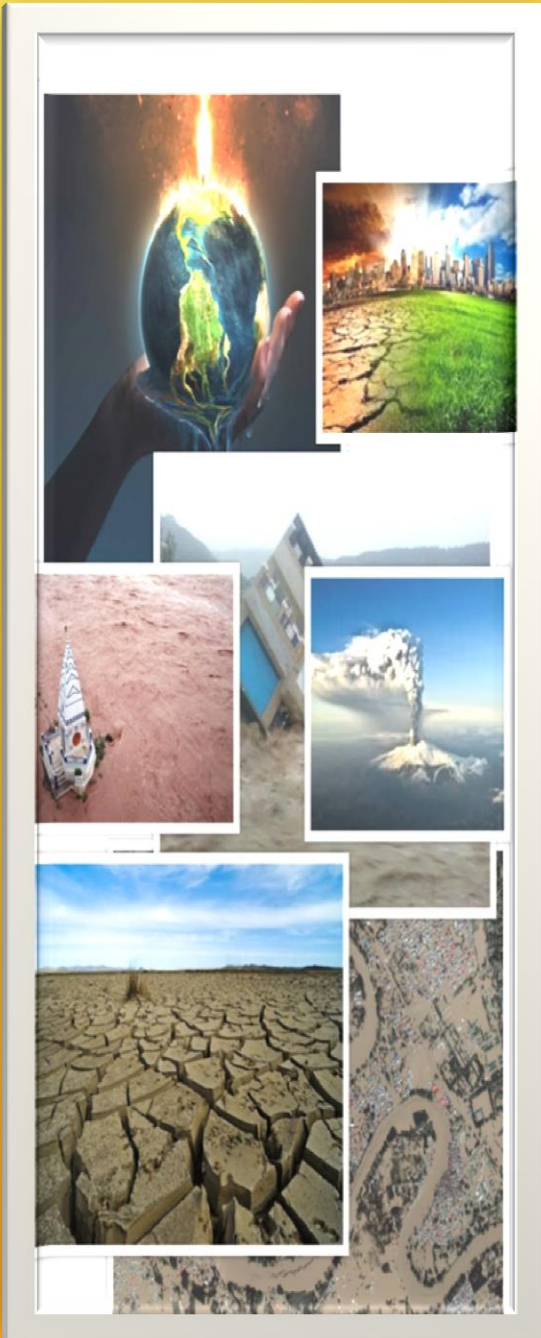
## SDG GOAL-12 ENSURE SUSTAINABLE CONSUMPTION & PRODUCTION PATTERNS

SNO	INDICATOR	VALUE OF INDICATOR			
		UNIT	YEAR	JK VALUE	ALL INDIA VALUE
<b>12.2 By 2030, achieve the sustainable management and efficient use of natural resources</b>					
1	12.2.1.a : Percentage of Ground Water withdrawal against availability Source: PHE,I&FC MoWR, RD & GR {Ground Water Year Book } (UT Specific Indicator)	Percentage	2013	24.48	61.53
			2017	29.47	63.33
2	12.2.1.b: Forest area as a proportion of total land area Source: State of Forest Report 2017 (MOEF&CC ) (UT Specific Indicator)	Percentage	2015	10.34	21.35
			2018	10.62% <b>39.66 %</b> <b>JK UT</b>	21.67
<b>12.3 : By 2030, halve per capita global food waste at the retail and consumer levels and reduce food losses along production and supply chains, including post-harvest losses</b>					
3	12.3.1:Per Capita Food Availability Source: (Ministry of Agriculture)/ Agriculture/CAPD (*State agriculture department)	Kgs/year	2015-16	165.00*	169.80
			2018-19	170.00*	180.10
4	12.3.2: Post harvest Storage and distribution losses and central / States pool stocks of wheat and rice Source: CAPD/ Ministry of CAPD	Percentage Loss	2015-16	0.02 Storage 0.18 T&D	Minus 0.09 Storage 0.3 T&D
			2018-19	0.03 Storage 0.2 T&D	Minus 0.14 Storage 0.25 T&D
5	12.3.2.a : Percentage of fresh fruit processed to Total Production in the State (Number of Food Processing Units in the State) Source: Horticulture Department (UT Specific Indicator)	Percentage	2015-16	NA	UT Specific Indicator
			2018-19	16.66	UT Specific Indicator
6	12.3.2.b: Percentage increase in Cold Storage Capacity Source: Horticulture / Agriculture Production Deptt (UT Specific Indicator)	Percentage	2015-16	N.A.	UT Specific Indicator
			2018-19	13.45	UT Specific Indicator
<b>12.5 : By 2030, substantially reduce waste generation through prevention, reduction, recycling and reuse</b>					
7	12.5.2 : Number of municipal corporations using waste segregation techniques Source: H&UDD	Number	2015-16	02/02	NA
			2018-19	02/02	NA
8	12.5.3 : Number of municipal corporations banning single use of plastic Source: H&UDD	Number	2015-16	02/02 J&K Has Fully Banned any Usage of Plastic	NA
			2018-19	02/02 J&K Has Fully Banned any Usage of Plastic	NA
9	12.5.3.a : Percentage of Solid Waste Treated against Solid Waste Generated Source: H&UDD / SBM PORTAL (UT Specific Indicator)(*SBM PORTAL)	Percentage	2015-16	0.22	17.97
			As on Jan 2020	16.24*	60.00



## TAKE URGENT ACTION TO COMBAT CLIMATE CHANGE AND ITS IMPACTS

# Climate Action



The Earth's climate is changing, with severe consequences for our daily lives and the resilience of our countries. Climate change is disrupting national economies, people are experiencing changing weather patterns, rising sea levels, and extreme weather events. Greenhouse gas emissions from human activities driving this change continue to rise. The poorest and most vulnerable people are being affected the most in natural calamities. Climate change also exacerbates disasters and combating it is absolutely vital to guaranteeing our survival and the wellbeing of future generations. To deal this, government needs Action Plan.

The 13th SDG aims to reduce the effects of climate change on the planet and its life. It focuses on building resilience to disasters, spreading awareness, and improving institutional capacity and funding mechanisms for efficient action. UT of Jammu & Kashmir, which is in the fragile Himalayan Eco-system, Climate Change bears particular relevance as has been witnessed in the past (cloud bursts, floods, thunder storms, snow avalanches, earthquakes, Forest Fires etc). Climate change poses a serious threat to the agriculture, horticulture, water restoration, tourism, species, forest habitat, wildlife and basic livelihood in the region.

There are 5 targets in goal 13 to measure the changing impact of climate related hazardous. A total of 5 indicators have been identified at national level to measure & monitor the progress of these targets. Data is available for 3 indicators.

Jammu & Kashmir has identified 2 indicators covering 1 targets to measure & monitor the progress of these indicators.

The strategy to address this goal is to follow National Action Disaster Plan for which State Disaster Management Authority has been created for handling and managing disasters.

**13** CLIMATE ACTION



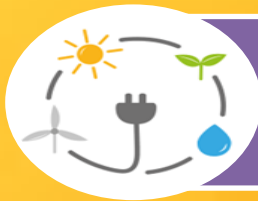
**TAKE URGENT ACTION TO COMBAT CLIMATE CHANGE AND ITS IMPACTS**



UT of Jammu & Kashmir has devised action plan for enhancing adaptive capacity and dealing with climate extreme weather events.



Number of deaths attributed to extreme climate per 1 lakh population has decreased from 0.16 in 2015-16 to 0.05 in 2017-18 in J&K.

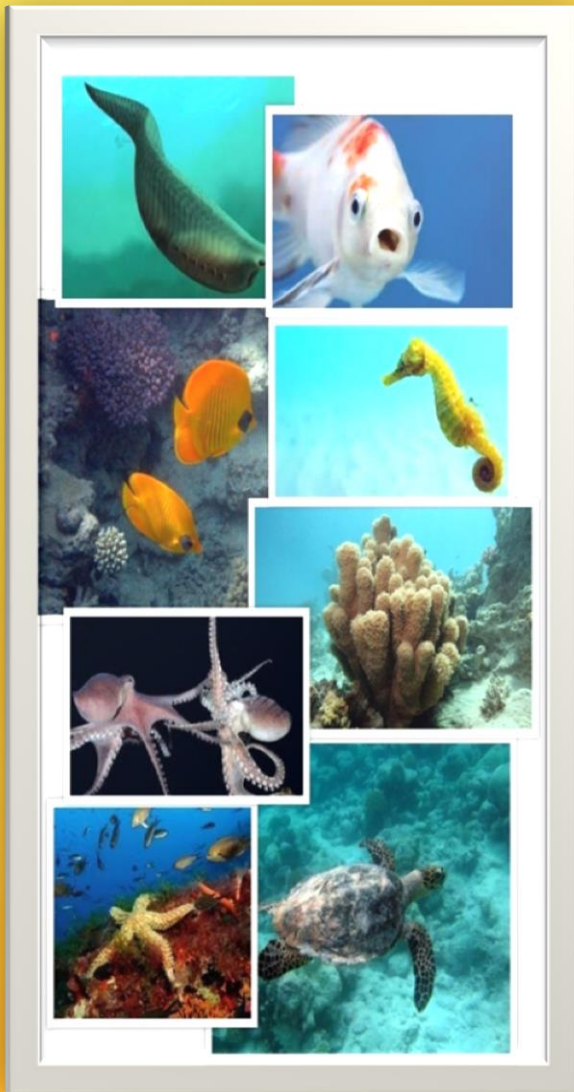


Renewable energy share in the total installed electricity generation was 74.12 in UT as compared to 34.55 at National level during 2018-19.

## SDG GOAL -13- TAKE URGENT ACTION TO COMBAT CLIMATE CHANGE AND ITS IMPACTS

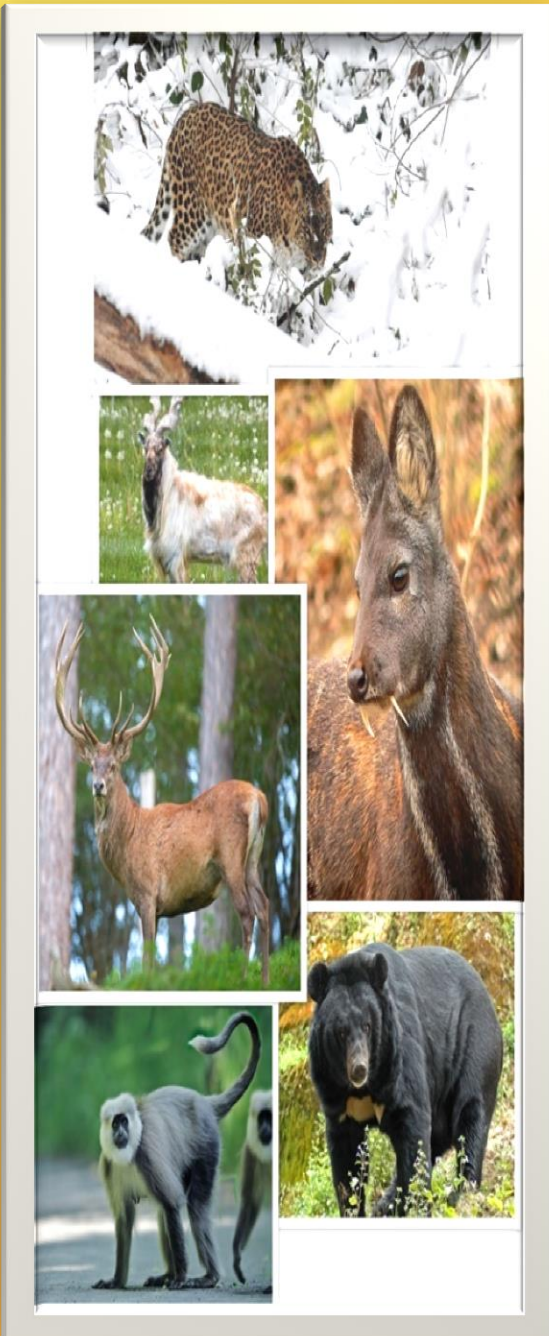
SNO	INDICATOR	VALUE OF INDICATOR			
		UNIT	YEAR	JK VALUE	ALL INDIA VALUE
<b>13.1 Strengthen resilience and adaptive capacity to climate-related hazards and natural disasters in all countries</b>					
1	13.1.2: Number of deaths attributed to extreme climate per 1 lakh population <i>Source: Revenue/ DMMR Ministry of Home Affairs</i>	Number per lakh population	2015-16	0.16	0.11
			2017-18	0.05	0.16
2	13.1.2.a: Renewable energy share in the total installed electricity generation <i>Source: MNRE/ PDD/ Science &amp; Technology Deptt(UT Specific Indicator)</i>	Percentage	2015-16	77.25	29.07
			2018-19	74.12	34.55

# Life Below Water



2030 agenda particularly Goal 14 seeks to conserve and sustainably use the oceans, seas and marine resources for sustainable development.

This Goal is not relevant to the Jammu & Kashmir as there is no coastline.



Land and forests are the foundation of sustainable development. Forests cover 30% of the Earth's surface and, in addition to providing food security and shelter, are key to combating climate change, protecting biodiversity and are home to the indigenous population. Forests are home to more than 80% of all terrestrial species of animals, plants and insects. Human life depends on the earth as much as on the ocean for sustenance and livelihoods.

A large section of the tribal population of Jammu & Kashmir depends on forests for livelihoods. Desertification and land degradation makes it further difficult for people in poverty to make both ends meet. The recorded forest area of Jammu & Kashmir was 20,230 Sq. km in 2015. This is about 10.34 of the total geographical area which has increased to 10.62 per cent in 2019. The protected area of the Jammu Kashmir is 7.16 percent of geographical area. Jammu & Kashmir has permanent snow cover and glaciers and unable to support tree growth. Forests of Jammu and Kashmir exhibit remarkable diversity ranging from sub-tropical to temperate to alpine because of the distinctive geo-climatic conditions prevalent in the State. The Forest Area of UT of Jammu & Kashmir is 39.66 percent (21122/53258 Sq. Kms) of the geographical area.

Goals 15 aim at sustainable management of forests, and combating desertification, land degradation, and biodiversity loss. Conservation and expansion of forests is crucial from ecological and economic stand points. A total of 16 indicators have been identified at national level to measure & monitor changing health & status of terrestrial ecosystems and data is available for 12 indicators. Jammu & Kashmir has identified 10 indicators covering 6 targets to measure & monitor the progress of these indicators. The strategy to address this goal is to promote policies that will protect and restore natural resources including forests and wildlife resources.

15 LIFE ON LAND



**PROTECT, RESTORE AND PROMOTE SUSTAINABLE USE OF TERRESTRIAL ECOSYSTEMS, SUSTAINABLY MANAGE FORESTS, COMBAT DESERTIFICATION AND HALT AND REVERSE LAND DEGRADATION AND HALT BIODIVERSITY LOSSES**



The Forest area as a proportion of total geographical area of UT was 39.66 percent in 2019.



Area of Ramsar cites as percentage to Total Wet Lands is 8.33 percent in J&K.



11,371 Hectares area was covered under different afforestation schemes in 2018-19 as compared to 10,863 Hectares in 2015-16.



Tree cover as percentage of total geographical area was 3.57 percent in 2019 as compared to 2.89 at National Level.



No case was registered under Wild Protection Act, 1972 during 2018-19 in J&K.

**SDG GOAL -15- PROTECT, RESTORE AND PROMOTE SUSTAINABLE USE OF TERRESTRIAL ECOSYSTEMS, SUSTAINABLY MANAGE FORESTS, COMBAT DESERTIFICATION AND HALT AND REVERSE LAND DEGRADATION AND HALT BIODIVERSITY LOSSES**

SNO	INDICATOR	VALUE OF INDICATOR			
		UNIT	YEAR	JK VALUE	ALL INDIA VALUE
<b>15.1 By 2020, ensure the conservation, restoration and sustainable use of terrestrial and inland freshwater ecosystems and their services, in particular forests, wetlands, mountains and dry lands, in line with obligations under international agreements</b>					
1	15.1.1: Forest area as a proportion of total geographical area <i>Source: Forest Department (State of Forest Report (MOEF&amp;CC))</i>	Percentage	2015	10.34	21.56
			2019	10.62 <b>(39.66 JK UT)</b>	21.67
2	15.1.2: Protected area as percentage of total geographical area Forest Department <i>Source: State of Forest Report (MOEF&amp;CC)</i> <i>(Protected area on this side of line of actual control )</i>	Area in Th. Sq. Km	2017	6.38	4.85
			2019	7.16	4.88
3	15.1.3: Area of Ramsar cites as percentage to Total Wet Lands <i>Source: Envistat 2020 &amp; Ramsar area MoEF&amp;CC</i>	Percentage	2019	8.33	7.00
<b>15.2 By 2020, promote the implementation of sustainable management of all types of forests, halt deforestation, restore degraded forests and substantially increase afforestation and reforestation globally</b>					
4	15.2.1: Percent change in Forest Cover <i>Source: Forest Department (State of Forest Report (MOEF&amp;CC))</i>	Percentage	2013-15	2.00	0.54
			2017-19	1.60 for State 1.68 for UT	0.56
5	15.2.2: Total area covered under different afforestation schemes <i>Source: Forest Department (Annual Report of TPP, MOSPI)</i>	Hectares	2015-16	10,863	13.82 lakh
			2017-18	11,371	16.88 lakh
6	15.2.3: Tree cover as percentage of total geographical area <i>Source: Forest Deptt, State of Forest Report</i>	Percentage	2015	3.76	2.82
			2019	3.57	2.89
<b>15.3 By 2030, combat desertification, restore degraded land and soil, including land affected by desertification, drought and floods, and strive to achieve a land degradation-neutral world</b>					
7	15.3.1: Proportion of land that is desertified /degraded over total land area <i>Source: Agriculture Production Deptt (Remote Sensing Department - Desertification and Land Degradation Atlas of India )</i>	Percentage	2011-13	35.86	29.32
			2017-19	NA	27.77
<b>15.4 By 2030, ensure the conservation of mountain ecosystems, including their biodiversity, in order to enhance their capacity to provide benefits that are essential for sustainable development</b>					
8	15.4.1: Increase in forest / vegetative cover in hill districts (mountain areas) <i>Source: Forest Deptt (State of Forest Report )/MoEF&amp;CC</i>	Percentage Change	2013-15	Minus 0.31 7.69	0.60
			2017-19	1.60	0.19
9	15.4.4: Percentage change in Per Capita income of Himalayan States over previous year <i>(Source: Ministry of Statistics, NAD)</i>	Percentage	2015-16	19.61	10.58
			2018-19	11.09	10.31
<b>15.7 Take urgent action to end poaching and trafficking of protected species of flora and fauna and address both demand and supply of illegal wildlife products &amp; 15.c Enhance global support for efforts to combat poaching and trafficking of protected species, including by increasing the capacity of local communities to pursue sustainable livelihood opportunities</b>					
10& 11	15.7.1&15.c.1 : Number of cases registered under wild Protection Act , 1972 <i>Source: Forest Department (Ministry of Environment, Forest &amp; Climate Change)</i>	Number	2015	1	698
			2018	N.A.	207



**PROMOTE PEACEFUL AND INCLUSIVE SOCIETIES FOR SUSTAINABLE DEVELOPMENT, PROVIDE ACCESS TO JUSTICE FOR ALL AND BUILD EFFECTIVE, ACCOUNTABLE AND INCLUSIVE INSTITUTIONS AT ALL LEVELS**

**Peace Justice and Strong Institutions**



The first step to fulfilling any aspect of the global sustainable development agenda for 2030 will begin with restoring security and human rights to individuals whose very lives and basic freedoms are under threat either due to direct violence or through institutional restrictions to justice.

The 16th SDG aims at promoting peaceful and inclusive Societies for Sustainable Development provide access to justice for all and build effective, accountable and inclusive institutions.

There are 12 targets in Goal 16 to ensure peaceful & just societies. A total of 19 indicators have been identified at National Level to measure & monitor progress on these targets and baseline data is available for all 19 indicators.

Jammu & Kashmir has identified 15 indicators covering 8 targets to measure & monitor the progress of these indicators.

The strategy to address this goal is to provide access to justice through good governance, decreasing the crimes and ensuring safety and security of the citizens.

**16** PEACE, JUSTICE  
AND STRONG  
INSTITUTIONS



**PROMOTE PEACEFUL AND INCLUSIVE SOCIETIES FOR SUSTAINABLE DEVELOPMENT, PROVIDE ACCESS TO JUSTICE FOR ALL AND BUILD EFFECTIVE, ACCOUNTABLE AND INCLUSIVE INSTITUTIONS AT ALL LEVELS**



Number of victims of intentional homicide per lakh population has increased from 1.37 in 2015 to 1.58 in 2018 in J&K.



Number of Courts per lakh population was 0.02 in 2019 as compared to 1.82 at National level.  
Number of Judges (all levels) per lakh population was 0.02 in 2019 as compared to 1.38 at National Level.



Cases reported under Prevention of Corruption Act and related sections of Indian Penal Code (IPC) per 1 lakh population have decreased from 0.79 in 2015 to 0.63 in 2018 in J&K.



Percentage of Births registered has increased from 76.3 percent in 2015 to 78.80 percent in 2017 in J&K.



76.53 percent of population is covered under Aadhaar in 2018-19 in J&K.

**SDG GOAL -16- PROMOTE PEACEFUL AND INCLUSIVE SOCIETIES FOR SUSTAINABLE DEVELOPMENT, PROVIDE ACCESS TO JUSTICE FOR ALL AND BUILD EFFECTIVE, ACCOUNTABLE AND INCLUSIVE INSTITUTIONS AT ALL LEVELS**

SNO	INDICATOR	VALUE OF INDICATOR			
		UNIT	YEAR	JK VALUE	ALL INDIA VALUE
<b>16.1 : Significantly reduce all forms of violence and related death rates everywhere</b>					
1	16.1.1 : Number of victims of intentional homicide per 100,000 population <i>Source: Home Deptt (National Crime Records Bureau MHA, )</i>	Number Per lakh	2015	1.37	2.63
			2018	1.58	2.28
2	16.1.2: Per 1 Lakh Population subjected to physical, psychological or sexual violence in the previous 12 months <i>Source: Home Deptt (National Crime Records Bureau MHA,</i>	Number Per lakh	2015	42.94	58.62
			2018	72.44	96.89
<b>16.2 : End abuse, exploitation, trafficking and all forms of violence against and torture of children</b>					
3	16.2.1 : Number of victims rescued from human trafficking per 100,000 population, by sex, age and form of exploitation <i>Source: Home Deptt (National Crime Records Bureau MHA)</i>	Number Per lakh	2015	0.02	1.99
			2018	0.01	0.40
4	16.2.2 : Proportion of crime committed against children during the year (rate per lakh children) <i>Source: Home Deptt (National Crime Records Bureau MHA, )</i>	Rate per lakh children	2015	6.93	22.06
			2018	11.47	33.74
5	16.2.3 : Number of missing children <i>Source: Home Deptt (National Crime Records Bureau MHA, )</i>	Number	2015	Overall: 414 Boys: 198 Girls: 216	Overall:60443 Boys: 23848 Girls: 36595
			2018	Overall :294 Boys: 94 Female: 200	Overall :67134 Boys: NA Girls: NA
<b>16.3 : Promote the rule of law at the national and international levels and ensure equal access to justice for all</b>					
6	16.3.1 : Number of Courts per lakh population <i>Source: Law Department (MINISTRY OF LAW&amp; JUSTICE)</i>	Number per lakh population	2016	0.02	1.81
			2019	0.02	1.82
7	16.3.2 : Number of Judges (all levels) per lakh population <i>Source: Law Department (MINISTRY OF LAW&amp; JUSTICE)</i>	Number per lakh population	2016	0.02	1.32
			2019	0.02	1.38
8	16.3.3: Un-sentenced detainees as a proportion of overall prisoner population <i>Source: Home Deptt (National Crime Records Bureau MHA,</i>	Proportion	2015	81.50	67.20
			2018	83.20	69.40
<b>16.4 : By 2030, significantly reduce illicit financial and arms flows, strengthen the recovery and return of stolen assets and combat all forms of organized crime</b>					
9	16.4.1 : Number of cases under the Arms Act <i>Source: Home Deptt (National Crime Records Bureau MHA,</i>	Number	2015	146	53,300
			2018	332	66,305
10	16.4.2 : Value of Property stolen and Recovered and Percentage Recovery <i>Source: Home Deptt (National Crime Records Bureau MHA, )</i>	Rupees in Crore/ Percentage	2015	Property stolen recovered 9.7 Cr. Property stolen 25.6 Cr. Percentage property recovered 37.70%	Property stolen recovered 1350.2 Cr Property stolen 8210.4 Cr Percentage property recovered 16.4 %
			2018	Property stolen recovered 11.1 Cr. Property stolen 33.4 Cr. Percentage property recovered 33.3 %	Property stolen recovered 1849.90 Cr Property stolen 5227.00 Cr Percentage property recovered 35.4 %

**SDG GOAL -16- PROMOTE PEACEFUL AND INCLUSIVE SOCIETIES FOR SUSTAINABLE DEVELOPMENT, PROVIDE ACCESS TO JUSTICE FOR ALL AND BUILD EFFECTIVE, ACCOUNTABLE AND INCLUSIVE INSTITUTIONS AT ALL LEVELS**

SN O	INDICATOR	VALUE OF INDICATOR			
		UNIT	YEAR	JK VALUE	ALL INDIA VALUE
<b>16.5 : Substantially reduce corruption and bribery in all their forms</b>					
11	16.5.1 : Cases reported under Prevention of Corruption Act and related sections of Indian Penal Code (IPC) per 1 lakh population <i>Source: Home Deptt (National Crime Records Bureau MHA, )</i>	Number per lakh population	2015	0.79	0.42
			2018	0.63	0.32
<b>16.6 : Develop effective, accountable and transparent institutions at all levels</b>					
12	16.6.1 : Number of government services provided online to citizens <i>Source: Ministry of Electronics &amp; IT (MeitY)</i>	Number	2015	58	3577
			2018-19	54	3246
<b>16.7 : Ensure responsive, inclusive, participatory and representative decision-making at all levels</b>					
13	16.7.1 : Proportion of seats held by women in National Parliament, State Legislature and Local Self government <i>Source: Chief Election Officer, India/JK, RajyaSabhaSectt, Ministry of Panchayati Raj</i>	Percentage	2014	J&K State Legislative Assembly: 2.30 PRIs : 33.56	Lok Sabha:11.40 Rajya Sabha: 12.80 PRIs: 46.14
			2018-19	J&K State Legislative Assembly: NOT IN PLACE PRIs: 33.56	Lok Sabha:14.36 Rajya Sabha: 10.46 PRIs: 44.37
14	16.7.2 : Proportion of SC/ST persons in elected bodies (in percentage in Lok Sabha) <i>Source: Chief Election Officer, India/JK, RajyaSabhaSectt, Ministry of Panchayati Raj</i>	Percentage	2014	Lok Sabha SC/ST: 0	Lok Sabha SC:15.50 Lok Sabha ST: 8.70
			2019	Lok Sabha SC/ST: 0	Lok Sabha SC: 15.50 Lok Sabha ST: 8.67
<b>16.9 : By 2030, provide legal identity for all, including birth registration</b>					
15	16.9.1 : Percentage of Births registered <i>Source: DES (Vital Statistics RGI 2016)</i>	Percentage	2015	76.3	88.3
			2017	78.8	84.9
16	16.9.2 : Proportion of population covered under Aadhaar <i>Source: UIDAI, J&amp;K</i>	Percentage	2016-17	66.63	85.73
			2018-19	76.53	88.79



## SDG FRAMEWORK ADOPTION BY JAMMU & KASHMIR

Ministry of Statistics and Programme Implementation (MoSPI), GoI, prepared a basic document on Sustainable Development Goals in 2019 which covered list of targets and 306 indicators selected by MoSPI, Data on some selected basic indicators, meta sheets, etc. During 2020 march, MoSPI, GoI, came up with a refined version 2.0 Progress Report, 2020 on National Indicator Framework on Sustainable Development Goals in which some indicators have been added, deleted and amended. The revised report contains 297 indicators and has comparative data for 2015-16 and 2018-19 wherever possible.

### JAMMU& KASHMIR SDG FRAMEWORK

The state government has followed a rigorous and logical step-by-step process of adopting SDGs – including goal setting, target prioritization, indicator selection, scheme analysis, and developing a monitoring system.

On the instructions of MoSPI & NITI Aayog, GoI, PD&MD, J&K initiated framing of Union Territory Indicator Framework (UTIF) on Sustainable Development Goals on the analogy of National Indicator Framework (NIF). Government of Jammu & Kashmir constituted a State Level Committee for SDGs under the Chairmanship of Chief Secretary, J&K with Administrative Secretaries of Major Departments as members.

The UT Indicator Framework was prepared in consultation with NITI Aayog and MoSPI, GoI. J&K UTIF covers **15 Goals, 84 Targets and 226 Indicators**. All these indicators are connected with availability of basic amenities to the general public which include education, health, food, nutrition, housing, sanitation, water, electricity, viz-a-viz economic growth & development, protection of environment, social security & good governance. The UTIF was shared with the NITI Aayog/ MoSPI on 24<sup>th</sup> October, 2019 for preparation of Dash Board. After finalisation of Dash Board, the information on all the indicators shall be uploaded regularly for monitoring and keeping track on the achievements/performance of SDG Indicators.

Similarly, District Indicator Framework (DIF) of Union Territory of Jammu & Kashmir on Sustainable Development Goals has also been prepared by PD&MD as a subset of Union Territory Indicator Framework (UTIF) for monitoring the progress on SDG Goals. J&K DIF covers **15 Goals, 62 Targets and 166 Indicators**. The DIF also stands shared with the NITI Aayog/ MoSPI for its inter-linkage with UT Dash Board. All the districts shall be able to monitor the progress on SDG indicators as well as

Targets and Goals and ranking of Districts shall be made on the progress achieved on these parameters. ***The progress on District Indicator Framework (DIF) on Sustainable Development Goals for Union Territory of Jammu & Kashmir got slowed down due to Covid 19 Pandemic, as the feedback/data from the ground level was not forthcoming.***

In light of the revised SDG NIF (Version- 2.0) released by MoSPI, GoI, on 31<sup>st</sup> March 2020, the UT Indicator Framework of Jammu & Kashmir on SDGs was updated and necessary data was also filled in, wherever possible. Based on the availability of data, **191 indicators covering 79 targets were shortlisted for Jammu& Kashmir SDG Indicator Framework in the first instance.** These 208 indicators include 26 UT specific/localized indicators.

The updated UT Indicator Framework Jammu & Kashmir approved by Chief Secretary (Chairman, State level Committee on SDGs) was forwarded to MOSPI, GoI, NITI Aayog, GoI, on 20<sup>th</sup> May 2020.

Meanwhile SDG NIF (Version- 2.0) stands upgraded by MoSPI, GoI, and fresh version SDG NIF (Version- 2.1) was released on 29<sup>th</sup> June 2020. The UT Indicator Framework of Jammu & Kashmir on SDGs was updated and necessary data was also filled in, wherever possible. Based on the availability of data, **206 indicators covering 81 targets have been shortlisted for Jammu & Kashmir SDG Indicator Framework in the first instance.** These 206 indicators include 23 UT specific/localized indicators. The majority of the data has been taken from national publications and portals and for state specific indicators from state sources.

Now, the progress achieved on these 206 indicators by the Jammu & Kashmir has been compiled and prepared into a booklet "**UT Progress Report on SDGs - 2020**" based on the available data for 2015-16 and 2018-19. This is the first exercise in this regard as such there may be some fallacies in the data/presentation as such may be communicated to PD&MD for its rectification in the next year's publication.

The information shall be collected periodically and publication shall be updated annually. The structure of the publication shall also witness changes with time e.g., number of indicators/ targets, change in existing indicators based on the data availability from various reliable sources.

\*\*\*\*\*

## TEAM OF OFFICERS ASSOCIATED WITH THE PUBLICATION

Satvir Kour Sudan  
Director General

Suneel Pandita  
Joint Director

Lalit Bhat  
Assistant Director

G.M. Dar  
Assistant Director

Vishal Mehta  
Statistical Officer

Vishal Nagar  
Statistical Assistant

Pawan Sharma  
Junior Statistical Assistant

# UNION TERRITORY JAMMU & KASHMIR

## PROGRESS REPORT - 2020 ON SUSTAINABLE DEVELOPMENT GOALS



**SDG UNIT**  
**PLANNING DEVELOPMENT AND MONITORING DEPARTMENT, J&K,**  
**CIVIL SECRETARIAT, JAMMU.**  
(suneelpanditades@gmail.com)

([www.jkplanning.gov.in](http://www.jkplanning.gov.in))



**UNION TERRITORY OF JAMMU KASHMIR**  
**PLANNING DEVELOPMENT AND MONITORING DEPARTMENT**  
**(suneelpanditades@gmail.com)**  
**(www.jkplanning.gov.in)**